

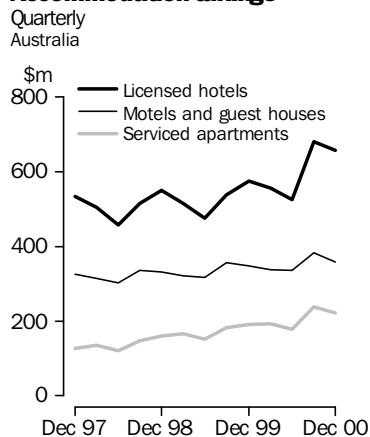


TOURIST ACCOMMODATION AUSTRALIA

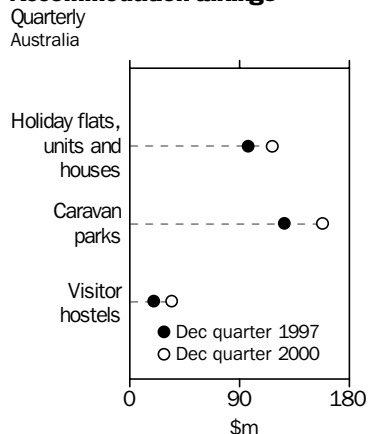
EMBARGO: 11:30AM (CANBERRA TIME) FRIDAY 23 MAR 2001

DECEMBER QTR KEY FIGURES

Accommodation takings



Accommodation takings



LICENSED HOTELS	Dec Qtr 1999	Dec Qtr 2000	change
Rooms available (no.)	73 416	76 783	4.6 %
Room occupancy rate (%)	65.1	65.3	0.2 pts
Takings from accommodation (\$'000)	574 687	659 337	14.7 %
Average takings per room night occupied (\$)	130.9	143.1	12.2 \$

MOTELS AND GUEST HOUSES

Rooms available (no.)	86 019	84 722	-1.5 %
Room occupancy rate (%)	54.8	52.4	-2.4 pts
Takings from accommodation (\$'000)	347 480	359 491	3.5 %
Average takings per room night occupied (\$)	80.3	88.0	7.7 \$

SERVICED APARTMENTS

Rooms available (no.)	30 644	33 421	9.1 %
Room occupancy rate (%)	60.8	60.3	-0.5 pts
Takings from accommodation (\$'000)	190 280	221 080	16.2 %
Average takings per room night occupied (\$)	112.2	119.3	7.1 \$

HOLIDAY FLATS, UNITS AND HOUSES

	Dec Qtr 1997	Dec Qtr 2000	change
Units, etc. available (no.)	28 820	29 835	3.5 %
Unit occupancy rate (%)	50.7	51.5	0.8 pts
Takings from accommodation (\$'000)	97 073	117 212	20.7 %
Average takings per unit night occupied (\$)	72.3	85.7	13.4 \$

CARAVAN PARKS

Sites, cabins, etc. available (no.)	254 363	244 905	-3.7 %
Site occupancy rate (%)	46.4	48.4	2.0 pts
Takings from accommodation (\$'000)	126 698	157 838	24.5 %
Average takings per site night occupied (\$)	11.7	14.5	2.8 \$

VISITOR HOSTELS

Bed spaces available (no.)	30 650	40 659	32.7 %
Bed occupancy rate (%)	49.5	48.6	-0.9 pts
Takings from accommodation (\$'000)	20 292	34 791	71.5 %
Average takings per guest night occupied (\$)	14.6	19.2	4.6 \$

- For further information about these and related statistics contact Neil McKellar-Stewart on 07 3222 6364 or the National Information Service on 1300 135 070.

NOTES

FORTHCOMING ISSUES

<i>ISSUE</i>	<i>RELEASE DATE</i>
March Quarter 2001	22 June 2001

INTRODUCTION

For the four quarters of 2000, the scope of the Survey of Tourist Accommodation (STA) has been expanded. Over this period the following accommodation sectors are included in the survey:

- hotels, motels, guest houses and serviced apartments with 15 or more rooms;
- holiday flats, units and houses operated by owners, managers or real estate agents who have sole letting rights to at least 15 flats, units or houses for short term letting;
- caravan parks with 40 or more powered sites, cabins, etc; and
- visitor hostels with 25 or more bed spaces.

DATA NOTES

The 'takings from accommodation' data collected from 1 July 2000 is on a GST inclusive basis. Care should be taken when comparing takings data from September quarter 2000 onwards with takings from previous quarters.

Some instances where establishments have not included GST in 'takings from accommodation' have been identified. The ABS is currently investigating the extent of this under-reporting. If the under-reporting is found to be significant, revisions will be included in a future issue of this publication.

HISTORICAL COMPARISONS

Statistics for hotels, motels, guest houses and serviced apartments are presented for the last 6 quarters to allow for comparison over time. However, data for caravan parks, holiday flats, units and houses and visitor hostels are compared with the corresponding period in 1997 when the data were last collected.

SYMBOLS AND OTHER USAGES

n.a.	not available
n.p.	not available for publication but included in totals where applicable
r	revised
..	not applicable
—	nil or rounded to zero

D. Trewin
Australian Statistician

ANALYSES AND COMMENTS

HOTELS, MOTELS AND SERVICED APARTMENTS

The number of in-scope establishments in the hotels, motels, guest houses and serviced apartments sectors of the tourist accommodation industry increased 1.3% in December quarter 2000 when compared with December quarter 1999. The number of serviced apartments showed the largest increase (up 7.7%).

Supply of guest rooms in Australian hotels and serviced apartments continued to increase with guest rooms in serviced apartments up 9.1%, in December quarter 2000 compared to December quarter 1999. Hotel guest rooms also increased (up 4.6%), while guest rooms in motels and guest houses decreased 1.5%.

Room occupancy rates in licensed hotels increased by 0.2 percentage points to 65.3% in December quarter 2000 compared with December quarter 1999. In the same period, room occupancy rates fell 2.4 percentage points to 52.4%, and 0.5 percentage points to 60.3%, for motels (and guest houses) and serviced apartments respectively. Room nights occupied increased by 5% for hotels, and 9.3% for serviced apartments.

Guest arrivals were down 1.3% across Australia in the December quarter 2000, when compared to the corresponding quarter in 1999. Motel and guest house arrivals decreased 5% and hotel arrivals decreased 1.2%. These were partly offset by a 14.1% increase in guest arrivals to serviced apartments.

Accommodation takings in hotels, motels, guest houses and serviced apartments for the year ended 31 December 2000 totalled \$4.7 million of which just over half was taken by licensed hotels. Overall takings increased 11.5% in this quarter compared with the same period in 1999, with high growth in serviced apartments (up 16.2%), licensed hotels (up 14.7%) and moderate growth in motels and guest houses (up 3.5%).

OCCUPANCY AND TAKINGS IN NEW SOUTH WALES DURING THE OLYMPIC PERIOD

The Olympic and Para-Olympic Games were held in Sydney during the months of September and October 2000, and contribute to accommodation statistics for both the September and December quarters. In New South Wales, occupancy rates for hotels, motels, guest houses and serviced apartments were down on the same period in 1999 for both quarters (down 1.4 percentage points in September quarter 2000 and 2.2 percentage points in December quarter 2000). While there were increases in room nights occupied (up 5.9% and 2.2% respectively), growth in capacity was stronger with the number of guest rooms up 7.9% and 5.7% respectively. Takings in the September and December quarters 2000 increased markedly on 1999 (up 48.1% and 16.6%) reflecting higher average costs per room night occupied (up 39.8% and 14.1%). The relative increases were highest for licensed hotels and serviced apartments with star gradings of 3 or more.

ANALYSES AND COMMENTS

HOLIDAY FLATS, UNITS
AND HOUSES,
CARAVAN PARKS AND
VISITOR HOSTELS

The number of holiday flats, units and houses nationally in the December quarter 2000 increased by 3.5% when compared with December quarter 1997. At the same time there was a marginal increase in unit occupancy rates and a 20.6% increase in accommodation takings.

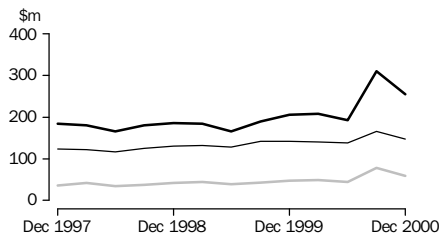
The capacity of caravan parks across Australia fell by 3.7% in the December quarter 2000 compared with December quarter 1997 with the number of powered and un-powered sites down 6.4% to 205 105. However, the number of cabins in caravan parks increased by 35.5% to 24 236. Over the three year period, site occupancy rates in caravan parks increased 2.0 percentage points to 48.4%. These changes corresponded to a 24.6% increase in takings from caravan parks in that period.

Compared to the December quarter 1997 the number of visitor hostels increased 18.3% to 466, in the December quarter 2000. This growth is also reflected in a 32.7% increase in bed spaces (to 40 659 spaces); a 30.6% increase in guest nights (to 1.81 million); and, a 27.2% increase in guest arrivals (to 0.68 million). These increases translated into a 71.5% rise in accommodation takings from visitor hostels.

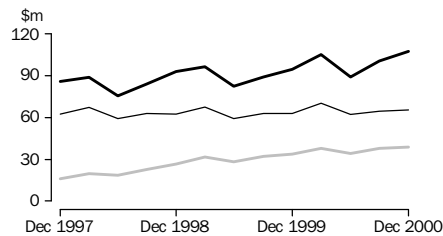
ACCOMMODATION TAKINGS

Licensed hotels
 Motels and guest houses
 Serviced apartments

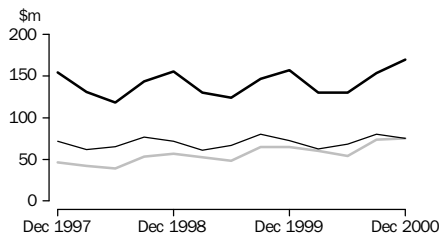
NEW SOUTH WALES



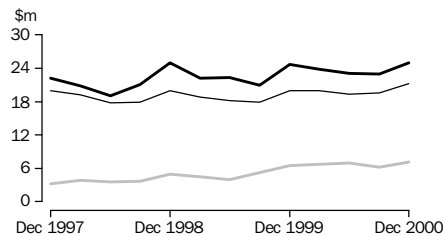
VICTORIA



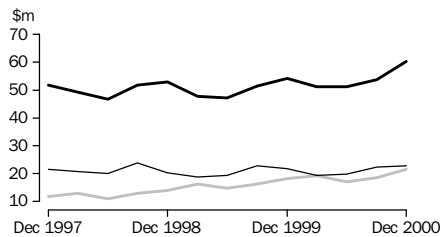
QUEENSLAND



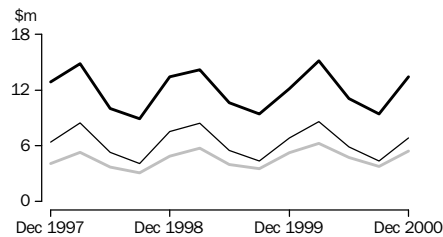
SOUTH AUSTRALIA



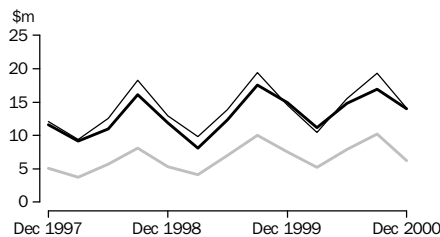
WESTERN AUSTRALIA



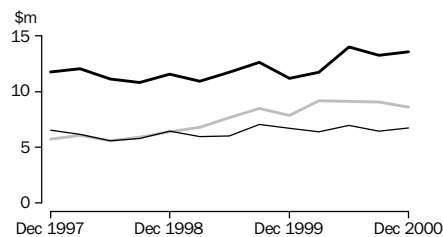
TASMANIA



NORTHERN TERRITORY



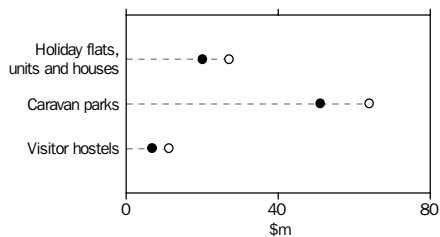
AUSTRALIAN CAPITAL TERRITORY



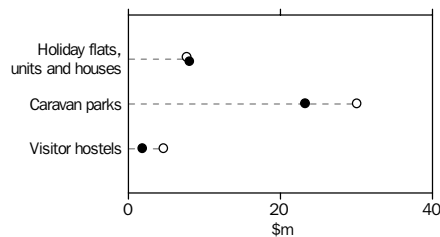
ACCOMMODATION TAKINGS

● December quarter 1997 ○ December quarter 2000

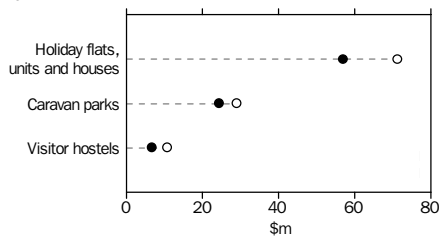
NEW SOUTH WALES



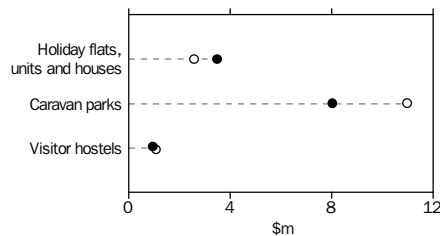
VICTORIA



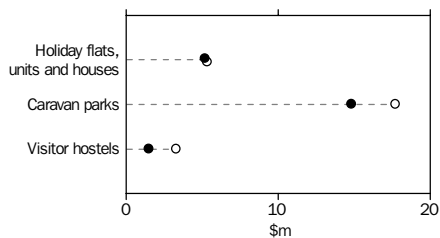
QUEENSLAND



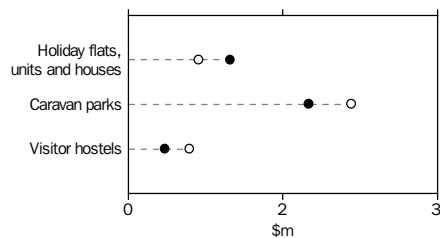
SOUTH AUSTRALIA



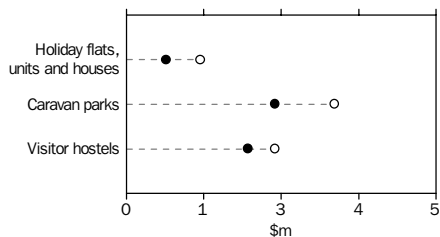
WESTERN AUSTRALIA



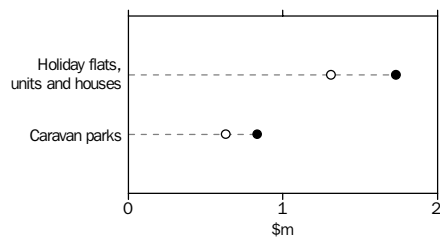
TASMANIA



NORTHERN TERRITORY



AUSTRALIAN CAPITAL TERRITORY



LIST OF TABLES

Page

	Summary of accommodation establishments	
1	Hotels, motels, guest houses and serviced apartments, Australia	8
2	Holiday flats, units and houses, Australia	9
3	Caravan parks, Australia	10
4	Visitor hostels, Australia	11
	Hotels, motels, guest houses and serviced apartments, by star grading	
5	Australia	12
6	New South Wales	14
7	Victoria	16
8	Queensland	18
9	South Australia	20
10	Western Australia	22
11	Tasmania	24
12	Northern Territory	26
13	Australian Capital Territory	28
	Hotels, motels, guest houses and serviced apartments, by Tourism Region	
14	New South Wales	30
15	Victoria	32
16	Queensland	34
17	South Australia	36
18	Western Australia	37
19	Tasmania	38
20	Northern Territory and Australian Capital Territory	39
	Holiday flats, units and houses: States, Territories and Australia	
21	Real estate agents	40
22	Other letting entities	41
23	Total	42
	Caravan parks: States, Territories and Australia	
24	Short-term	43
25	Long-term	44
26	Total	45
	Visitor hostels	
27	States, Territories and Australia	46

<i>Period</i>	<i>Establish-ments</i>	<i>Guest rooms</i>	<i>Bed spaces</i>	<i>Persons employed</i>	<i>Room nights occupied</i>	<i>Room occupancy rate</i>	<i>Guest nights</i>	<i>Bed occupancy rate</i>	<i>Guest arrivals</i>	<i>Average length of stay</i>	<i>Takings from accom-modation</i>
	no.	no.	no.	no.	'000	%	'000	%	'000	days	\$'000
LICENSED HOTELS WITH FACILITIES											
1999											
September quarter	753	72 265	194 757	71 644	4 281	64.9	7 122	40.0	3 074	2.3	537 904
December quarter	766	73 416	196 329	72 872	4 389	65.1	7 239	40.1	3 148	2.3	574 687
2000											
March quarter	767	73 760	197 179	72 728	4 239	63.3	6 950	38.9	2 989	2.3	556 825
June quarter	767	74 302	197 513	72 517	4 177	62.0	6 668	37.2	2 946	2.3	525 795
September quarter	774	76 607	203 977	73 695	4 447	63.3	7 261	38.8	2 955	2.5	681 214
December quarter	780	76 783	204 109	73 457	4 607	65.3	7 569	40.3	3 109	2.4	659 337
Year ended December 1999	16 575	63.1	27 238	38.5	11 764	2.3	2 103 616
Year ended December 2000	17 469	63.5	28 448	38.8	11 999	2.4	2 423 170
MOTELS AND GUEST HOUSES WITH FACILITIES											
1999											
September quarter	2 396	85 267	253 219	31 872	4 410	56.3	7 791	33.5	4 278	1.8	356 224
December quarter	2 413	86 019	255 588	31 429	4 328	54.8	7 578	32.3	4 163	1.8	347 480
2000											
March quarter	2 411	85 821	254 335	31 464	4 138	53.1	7 295	31.6	3 947	1.8	337 890
June quarter	2 412	86 091	254 578	31 341	4 176	53.4	7 214	31.2	3 977	1.8	335 620
September quarter	2 412	85 078	251 929	31 342	4 142	53.1	7 286	31.5	3 980	1.8	383 303
December quarter	2 402	84 722	250 170	30 328	4 083	52.4	7 167	31.2	3 955	1.8	359 491
Year ended December 1999	16 902	54.4	29 718	32.2	16 286	1.8	1 342 732
Year ended December 2000	16 539	53.0	28 962	31.4	15 859	1.8	1 416 305
SERVICED APARTMENTS											
1999											
September quarter	582	29 308	102 314	10 670	1 704	63.9	3 709	39.8	955	3.9	183 666
December quarter	600	30 644	107 748	10 851	1 696	60.8	3 673	37.3	1 002	3.7	190 280
2000											
March quarter	611	31 542	107 951	10 807	1 712	60.0	3 792	38.8	995	3.8	193 602
June quarter	626	32 437	110 381	11 400	1 647	55.9	3 488	34.8	923	3.8	178 063
September quarter	641	33 394	113 130	11 466	1 860	60.9	4 041	39.0	1 044	3.9	237 641
December quarter	646	33 421	113 267	11 612	1 853	60.3	4 040	38.8	1 143	3.5	221 080
Year ended December 1999	6 345	60.4	13 681	37.2	3 685	3.7	693 307
Year ended December 2000	7 072	59.3	15 360	37.8	4 105	3.7	830 387
TOTAL HOTELS, MOTELS, GUEST HOUSES AND SERVICED APARTMENTS											
1999											
September quarter	3 731	186 840	550 290	114 186	10 396	60.8	18 623	37.0	8 307	2.2	1 077 794
December quarter	3 779	190 079	559 665	115 152	10 414	59.7	18 490	36.0	8 313	2.2	1 112 447
2000											
March quarter	3 789	191 123	559 465	114 999	10 088	58.2	18 037	35.5	7 931	2.3	1 088 317
June quarter	3 805	192 830	562 472	115 258	10 000	57.1	17 370	34.0	7 847	2.2	1 039 478
September quarter	3 827	195 079	569 036	116 503	10 449	58.4	18 589	35.6	7 979	2.3	1 302 158
December quarter	3 828	194 926	567 546	115 397	10 543	58.8	18 775	36.0	8 207	2.3	1 239 908
Year ended December 1999	39 822	58.7	70 637	35.4	31 735	2.2	4 139 666
Year ended December 2000	41 080	58.1	72 771	35.3	31 963	2.3	4 669 862

(a) Comprising establishments with 15 or more rooms or units (see Explanatory Notes).

FLATS, UNITS AND HOUSES.

Period	Letting entities(a)	Single bedroom	Multiple bedroom	Total	Bed spaces	Persons employed(b)	Unit nights occupied	Unit occupancy rate	Unit lettings	Average length of stay	Takings from accommodation
	no.	no.	no.	no.	no.	no.	'000.	%.	'000	days	'000
REAL ESTATE AGENTS											
1997											
March quarter	222	690	13 244	13 934	69 368	—	567	45.3	71	7.9	33 021
June quarter	213	656	12 493	13 149	65 543	—	337	28.3	46	7.2	14 545
September quarter	211	665	12 472	13 137	66 020	—	450	37.2	55	8.2	20 658
December quarter	214	688	13 219	13 907	70 684	—	484	37.9	65	7.4	27 226
2000											
March quarter	197	744	12 790	13 534	68 737	—	570	46.3	77	7.4	37 969
June quarter	190	702	12 284	12 986	67 428	—	377	31.9	61	6.2	20 725
September quarter	191	803	12 969	13 772	73 471	—	440	34.8	61	7.2	32 814
December quarter	191	863	13 666	14 529	76 198	—	492	39.5	75	6.6	37 016
OTHER LETTING ENTITIES											
1997											
March quarter	428	3 743	10 205	13 948	55 777	2 757	786	62.6	159	4.9	63 658
June quarter	435	3 810	10 355	14 165	56 956	2 647	663	51.5	147	4.5	48 796
September quarter	439	3 806	10 475	14 281	57 299	2 742	885	67.4	167	5.3	65 560
December quarter	446	4 080	10 833	14 913	59 366	2 783	858	62.6	178	4.8	69 847
2000											
March quarter	446	4 132	10 587	14 719	58 458	2 701	819	61.4	171	4.8	68 140
June quarter	445	4 187	10 301	14 488	58 836	2 673	704	53.5	157	4.5	53 232
September quarter	440	4 186	10 274	14 460	58 652	2 781	834	62.8	186	4.5	71 532
December quarter	441	4 355	10 951	15 306	60 247	2 905	875	62.1	225	3.9	80 195
TOTAL HOLIDAY FLATS, UNITS AND HOUSES											
1997											
March quarter	650	4 433	23 449	27 882	125 145	2 757	1 354	54.0	231	5.9	96 679
June quarter	648	4 466	22 848	27 314	122 499	2 647	999	40.3	193	5.2	63 340
September quarter	650	4 471	22 947	27 418	123 319	2 742	1 335	52.9	222	6.0	86 219
December quarter	660	4 768	24 052	28 820	130 050	2 783	1 343	50.7	243	5.5	97 073
2000											
March quarter	643	4 876	23 377	28 253	127 195	2 701	1 389	54.2	249	5.6	106 110
June quarter	635	4 889	22 585	27 474	126 264	2 673	1 082	43.3	218	5.0	73 957
September quarter	631	4 989	23 243	28 232	132 123	2 781	1 273	49.2	247	5.1	104 345
December quarter	632	5 218	24 617	29 835	136 445	2 905	1 367	51.5	300	4.6	117 212

(a) The number of owners, managers or real estate agents with 15 or more self-contained units (see Explanatory Notes).

(b) Employment numbers exclude real estate agents and their employees.

CAPACITY.....

Period	Establish-ments	On-site vans	Other powered sites	Un-powered sites	Cabins, etc.	Total capacity	Persons employed	Sites occupied by long-term guests	Other sites permanently reserved	Site nights occupied	Site occupancy rate	Takings from accom-modation
	no.	no.	no.	no.	no.	no.	no.	no.	no.	'000	%	'000
SHORT-TERM CARAVAN PARKS (b)												
1997												
March quarter	1 185	7 680	116 035	40 556	9 932	174 203	5 485	9 625	42 228	7 520	48.0	84 199
June quarter	1 186	7 453	115 687	40 519	10 020	173 679	5 366	9 548	41 855	6 662	42.2	61 293
September quarter	1 216	7 767	118 012	40 805	10 687	177 271	5 568	10 173	42 083	7 149	43.9	73 547
December quarter	1 223	7 792	118 177	40 786	10 921	177 676	5 986	10 055	42 454	7 078	43.3	80 610
2000												
March quarter	1 197	8 421	114 419	34 982	14 401	172 223	6 122	10 734	43 422	7 765	49.6	99 515
June quarter	1 203	7 932	114 403	35 341	15 006	172 682	6 072	11 050	43 367	7 320	46.7	83 508
September quarter	1 194	7 607	114 785	35 444	15 138	172 974	6 142	10 987	43 409	7 361	46.3	98 151
December quarter	1 190	7 337	114 738	35 558	15 232	172 865	6 447	10 906	43 787	7 395	46.6	106 080
LONG-TERM CARAVAN PARKS (b)												
1997												
March quarter	704	9 980	51 972	11 674	6 980	80 606	3 017	33 010	2 173	3 901	53.8	47 035
June quarter	701	9 939	51 796	11 797	7 075	80 607	3 038	32 583	2 255	3 875	52.8	46 300
September quarter	669	9 501	49 472	10 876	6 830	76 679	2 880	32 072	2 003	3 888	55.1	47 494
December quarter	670	9 464	49 380	10 880	6 963	76 687	2 894	31 484	2 082	3 767	53.4	46 088
2000												
March quarter	630	10 345	43 266	8 926	9 257	71 794	2 941	28 359	2 498	3 603	55.1	49 310
June quarter	615	8 500	45 762	9 266	9 061	72 589	2 791	28 643	1 734	3 589	54.3	48 764
September quarter	609	8 149	45 894	9 198	8 804	72 045	2 844	28 562	1 731	3 809	57.5	56 756
December quarter	610	8 227	45 561	9 248	9 004	72 040	2 817	28 270	1 604	3 501	52.8	51 758
TOTAL CARAVAN PARKS												
1997												
March quarter	1 889	17 660	168 007	52 230	16 912	254 809	8 502	42 635	44 401	11 421	49.8	131 234
June quarter	1 887	17 392	167 483	52 316	17 095	254 286	8 404	42 131	44 110	10 538	45.5	107 593
September quarter	1 885	17 268	167 484	51 681	17 517	253 950	8 448	42 245	44 086	11 038	47.3	121 041
December quarter	1 893	17 256	167 557	51 666	17 884	254 363	8 880	41 539	44 536	10 845	46.4	126 698
2000												
March quarter	1 827	18 766	157 685	43 908	23 658	244 017	9 063	39 093	45 920	11 368	51.2	148 825
June quarter	1 818	16 432	160 165	44 607	24 067	245 271	8 863	39 693	45 101	10 909	48.9	132 272
September quarter	1 803	15 756	160 679	44 642	23 942	245 019	8 986	39 549	45 140	11 171	49.6	154 908
December quarter	1 800	15 564	160 299	44 806	24 236	244 905	9 337	39 176	45 391	10 896	48.4	157 838

(a) Comprising establishments with 40 or more powered sites and cabins, etc (see Explanatory Notes).

(b) For definitions of short-term and long-term caravan parks (see Glossary).

4

SUMMARY OF VISITOR HOSTELS (a)—AUSTRALIA

<i>Period</i>	<i>Establishments</i>	<i>Bed spaces</i>	<i>Persons employed</i>	<i>Guest nights</i>	<i>Bed occupancy rate</i>	<i>Guest arrivals</i>	<i>Average length of stay</i>	<i>Takings from accommodation</i>
	no.	no.	no.	no.	%	no.	days	\$'000
1997								
March quarter	388	30 291	1 863	1 313 991	48.9	490 568	2.7	18 498
June quarter	383	29 831	1 899	1 237 166	45.7	464 215	2.7	17 656
September quarter	389	30 128	1 985	1 315 598	47.6	526 191	2.5	19 238
December quarter	394	30 650	2 001	1 387 974	49.5	538 229	2.6	20 292
2000								
March quarter	478	39 792	3 300	1 810 102	50.4	670 190	2.7	30 664
June quarter	467	39 415	2 855	1 753 161	48.9	658 884	2.7	29 624
September quarter	466	40 336	3 071	1 778 447	48.0	693 191	2.6	34 718
December quarter	466	40 659	2 972	1 812 975	48.6	684 400	2.6	34 791

(a) Comprising establishments with 25 or more bed spaces (see Explanatory Notes).

STAR GRADING

Period	Licensed hotels with facilities	Motels and guest houses	Serviced apartments	1	2	3	4	5	Ungraded	Total
ESTABLISHMENTS, CAPACITY AND EMPLOYMENT (number)										
December quarter 1999										
Establishments	766	2 413	600	77	532	1 851	801	87	431	3 779
Guest rooms	73 416	86 019	30 644	2 316	15 269	72 247	62 191	21 968	16 088	190 079
Bed spaces	196 329	255 588	107 748	7 082	45 470	217 598	184 293	57 975	47 247	559 665
Persons employed	72 872	31 429	10 851	1 017	6 329	30 002	36 398	35 314	6 092	115 152
December quarter 2000										
Establishments	780	2 402	646	63	463	1 863	887	94	458	3 828
Guest rooms	76 783	84 722	33 421	2 028	13 425	70 881	69 610	22 619	16 363	194 926
Bed spaces	204 109	250 170	113 267	6 503	39 590	210 833	204 787	58 959	46 874	567 546
Persons employed	73 457	30 328	11 612	749	5 349	27 499	39 790	35 659	6 351	115 397
ROOM NIGHTS OCCUPIED ('000)										
1999										
December quarter	4 388.9	4 328.3	1 696.3	77.7	639.9	3 780.0	3 830.0	1 438.3	647.8	10 413.6
2000										
October	1 577.7	1 454.2	635.8	22.6	190.4	1 253.6	1 467.8	512.1	221.3	3 667.7
November	1 634.4	1 417.5	625.3	22.0	179.1	1 230.1	1 484.7	538.3	223.0	3 677.2
December	1 394.7	1 211.3	592.0	19.4	164.6	1 072.8	1 278.1	462.9	200.2	3 198.0
December quarter	4 606.7	4 083.0	1 853.2	64.0	534.1	3 556.6	4 230.5	1 513.3	644.4	10 543.0
ROOM OCCUPANCY RATES (%)										
1999										
December quarter	65.1	54.8	60.8	36.5	45.7	56.9	67.0	71.2	45.1	59.7
2000										
October	66.3	55.4	61.4	36.0	45.8	57.1	68.0	73.0	43.7	60.7
November	71.0	55.8	62.4	36.1	44.5	57.9	71.1	79.3	45.6	62.9
December	58.6	46.2	57.1	30.9	39.6	48.9	59.2	66.0	39.7	53.0
December quarter	65.3	52.4	60.3	34.3	43.3	54.6	66.1	72.7	43.0	58.8
GUEST NIGHTS ('000)										
1999										
December quarter	7 239.4	7 577.5	3 673.2	128.8	1 145.5	6 919.1	6 784.9	2 412.1	1 099.7	18 490.1
2000										
October	2 489.5	2 502.4	1 329.2	35.5	332.9	2 251.8	2 504.4	806.3	390.1	6 321.1
November	2 607.5	2 401.5	1 303.4	34.4	312.3	2 193.8	2 521.8	858.5	391.6	6 312.5
December	2 472.1	2 262.7	1 407.0	31.2	313.6	2 111.6	2 463.6	833.1	388.6	6 141.8
December quarter	7 569.1	7 166.6	4 039.7	101.2	958.8	6 557.2	7 489.8	2 498.0	1 170.3	18 775.4
BED OCCUPANCY RATES (%)										
1999										
December quarter	40.1	32.3	37.3	19.8	27.4	34.6	40.0	45.2	26.0	36.0
2000										
October	39.4	32.3	37.9	17.6	27.2	34.5	39.4	44.1	26.9	35.9
November	42.6	32.0	38.4	17.6	26.4	34.7	41.0	48.5	27.9	37.1
December	39.1	29.2	40.1	15.5	25.6	32.3	38.8	45.6	26.9	34.9
December quarter	40.3	31.2	38.8	16.9	26.4	33.8	39.8	46.1	27.2	36.0

(a) Comprising establishments with 15 or more rooms or units (see Explanatory Notes).

STAR GRADING

Period	Licensed hotels with facilities	Motels and guest houses	Serviced apartments	1	2	3	4	5	Ungraded	Total
GUEST ARRIVALS ('000)										
1999										
December quarter	3 148.1	4 162.6	1 002.0	65.8	656.2	3 429.3	2 849.2	860.3	451.8	8 312.7
2000										
October	1 009.8	1 370.8	373.5	20.3	191.9	1 114.8	984.0	288.5	154.7	2 754.1
November	1 081.6	1 325.4	378.5	19.4	176.0	1 092.2	1 023.3	319.4	155.2	2 785.5
December	1 017.6	1 258.9	390.8	17.2	181.1	1 048.9	962.9	306.2	151.0	2 667.3
December quarter	3 108.9	3 955.1	1 142.8	56.8	548.9	3 255.9	2 970.2	914.1	460.9	8 206.8
AVERAGE LENGTH OF STAY (days)										
1999										
December quarter	2.3	1.8	3.7	2.0	1.7	2.0	2.4	2.8	2.4	2.2
2000										
December quarter	2.4	1.8	3.5	1.8	1.7	2.0	2.5	2.7	2.5	2.3
TAKINGS FROM ACCOMMODATION (\$'000)										
1999										
December quarter	574 687	347 480	190 280	4 111	39 202	315 129	443 388	256 840	53 777	1 112 447
2000										
October	234 389	129 208	75 518	1 359	12 117	112 306	188 950	103 426	20 958	439 115
November	230 478	122 933	72 462	1 283	11 506	105 819	183 711	102 926	20 629	425 873
December	194 469	107 350	73 100	1 247	10 911	96 113	159 367	88 225	19 055	374 919
December quarter	659 337	359 491	221 080	3 889	34 534	314 238	532 027	294 577	60 642	1 239 908
AVERAGE TAKINGS PER ROOM NIGHT OCCUPIED (\$)										
1999										
December quarter	130.9	80.3	112.2	52.9	61.3	83.4	115.8	178.6	83.0	106.8
2000										
October	148.6	88.9	118.8	60.1	63.6	89.6	128.7	202.0	94.7	119.7
November	141.0	86.7	115.9	58.3	64.3	86.0	123.7	191.2	92.5	115.8
December	139.4	88.6	123.5	64.1	66.3	89.6	124.7	190.6	95.2	117.2
December quarter	143.1	88.0	119.3	60.7	64.7	88.4	125.8	194.7	94.1	117.6
AVERAGE TAKINGS PER AVAILABLE ROOM NIGHT (\$)										
1999										
December quarter	85.2	44.0	68.3	19.3	28.0	47.4	77.6	127.1	37.4	63.8
2000										
October	98.5	49.2	72.9	21.6	29.2	51.1	87.6	147.5	41.4	72.7
November	100.1	48.4	72.3	21.1	28.6	49.8	88.0	151.7	42.2	72.9
December	81.8	40.9	70.6	19.8	26.3	43.8	73.9	125.8	37.8	62.1
December quarter	93.4	46.2	71.9	20.8	28.0	48.2	83.1	141.6	40.4	69.2

(a) Comprising establishments with 15 or more rooms or units (see Explanatory Notes).

STAR GRADING

Period	Licensed hotels with facilities	Motels and guest houses	Serviced apartments	1	2	3	4	5	Ungraded	Total
ESTABLISHMENTS, CAPACITY AND EMPLOYMENT (number)										
December quarter 1999										
Establishments	181	1 002	123	37	201	676	195	21	176	1 306
Guest rooms	21 753	33 639	5 929	1 280	5 670	24 680	17 446	5 768	6 477	61 321
Bed spaces	54 310	101 314	21 032	4 394	17 057	72 991	49 351	13 626	19 237	176 656
Persons employed	20 461	12 413	2 303	450	2 021	9 433	11 884	9 455	1 934	35 177
December quarter 2000										
Establishments	194	994	136	31	178	702	220	24	169	1 324
Guest rooms	24 355	33 107	7 366	1 199	5 119	25 465	20 724	6 373	5 948	64 828
Bed spaces	60 621	98 650	24 932	4 292	15 193	74 764	57 809	14 677	17 468	184 203
Persons employed	21 150	11 781	2 791	269	1 748	9 422	12 730	9 767	1 786	35 722
ROOM NIGHTS OCCUPIED ('000)										
1999										
December quarter	1 362.8	1 720.2	340.1	42.3	262.4	1 348.3	1 140.2	382.1	247.7	3 423.1
2000										
October	516.6	565.4	130.8	11.7	80.3	462.6	450.9	141.7	65.7	1 212.8
November	537.4	544.2	133.7	12.0	75.0	451.4	459.4	150.3	67.1	1 215.3
December	457.5	483.5	128.8	11.1	73.1	401.6	397.7	125.9	60.4	1 069.8
December quarter	1 511.4	1 593.2	393.4	34.9	228.4	1 315.7	1 308.0	418.0	193.1	3 498.0
ROOM OCCUPANCY RATES (%)										
1999										
December quarter	68.2	55.7	63.3	35.9	50.6	59.4	71.0	72.0	42.7	60.9
2000										
October	68.4	55.1	57.3	31.5	50.6	58.7	70.2	71.7	35.6	60.4
November	73.5	54.8	60.5	33.3	48.9	59.2	73.9	78.6	37.6	62.5
December	60.6	47.2	56.4	30.0	46.0	51.0	61.9	63.7	32.8	53.3
December quarter	67.5	52.4	58.0	31.6	48.5	56.2	68.6	71.3	35.3	58.7
GUEST NIGHTS ('000)										
1999										
December quarter	2 160.0	3 043.3	689.6	74.5	481.9	2 415.6	1 912.0	598.3	410.7	5 893.0
2000										
October	764.9	990.5	243.2	17.0	144.8	810.0	707.2	208.9	110.7	1 998.6
November	832.4	931.2	253.2	17.9	132.3	792.8	734.0	226.6	113.0	2 016.7
December	780.9	912.1	281.1	17.8	140.3	775.4	715.8	217.1	107.7	1 974.1
December quarter	2 378.1	2 833.8	777.6	52.7	417.4	2 378.1	2 157.0	652.6	331.5	5 989.4
BED OCCUPANCY RATES (%)										
1999										
December quarter	43.3	32.7	36.0	18.4	30.8	36.0	42.1	47.7	23.7	36.4
2000										
October	40.7	32.4	31.5	12.8	30.7	35.0	39.5	45.9	20.4	35.0
November	45.8	31.5	33.9	13.9	29.0	35.4	42.3	51.5	21.6	36.5
December	41.6	29.9	36.4	13.4	29.8	33.5	39.9	47.7	19.9	34.6
December quarter	42.6	31.3	33.9	13.3	29.9	34.6	40.6	48.3	20.6	35.4

(a) Comprising establishments with 15 or more rooms or units (see Explanatory Notes).

STAR GRADING

Period	Licensed hotels with facilities	Motels and guest houses	Serviced apartments	1	2	3	4	5	Ungraded	Total
GUEST ARRIVALS ('000)										
1999										
December quarter	940.7	1 793.4	212.6	36.4	283.6	1 302.3	907.8	217.0	199.7	2 946.7
2000										
October	285.8	574.2	75.3	10.1	86.2	425.3	283.9	76.9	52.9	935.3
November	321.8	548.2	83.0	10.2	77.6	420.1	308.5	82.3	54.3	953.0
December	309.0	546.6	88.0	9.5	83.5	416.9	299.1	82.2	52.5	943.6
December quarter	916.6	1 669.0	246.3	29.8	247.3	1 262.3	891.5	241.4	159.7	2 831.9
AVERAGE LENGTH OF STAY (days)										
1999										
December quarter	2.3	1.7	3.2	2.0	1.7	1.9	2.1	2.8	2.1	2.0
2000										
December quarter	2.6	1.7	3.2	1.8	1.7	1.9	2.4	2.7	2.1	2.1
TAKINGS FROM ACCOMMODATION (\$'000)										
1999										
December quarter	206 017	142 238	46 910	2 511	16 734	117 249	152 851	85 801	20 019	395 165
2000										
October	94 536	53 531	20 502	764	5 205	46 177	71 180	38 831	6 414	168 570
November	86 887	48 654	18 353	788	4 943	40 707	64 806	36 658	5 990	153 894
December	73 637	45 076	19 580	789	5 026	38 187	56 974	31 646	5 670	138 293
December quarter	255 060	147 262	58 435	2 341	15 173	125 072	192 960	107 136	18 074	460 756
AVERAGE TAKINGS PER ROOM NIGHT OCCUPIED (\$)										
1999										
December quarter	151.2	82.7	137.9	59.3	63.8	87.0	134.1	224.6	80.8	115.4
2000										
October	183.0	94.7	156.7	65.1	64.8	99.8	157.9	274.0	97.7	139.0
November	161.7	89.4	137.2	65.7	65.9	90.2	141.1	243.8	89.3	126.6
December	161.0	93.2	152.0	70.9	68.8	95.1	143.3	251.4	93.9	129.3
December quarter	168.8	92.4	148.6	67.2	66.4	95.1	147.5	256.3	93.6	131.7
AVERAGE TAKINGS PER AVAILABLE ROOM NIGHT (\$)										
1999										
December quarter	103.2	46.1	87.3	21.3	32.3	51.6	95.2	161.7	34.5	70.3
2000										
October	125.2	52.2	89.8	20.6	32.8	58.6	110.8	196.5	34.8	83.9
November	118.9	49.0	83.1	21.9	32.2	53.3	104.2	191.7	33.6	79.2
December	97.5	44.0	85.7	21.2	31.7	48.5	88.7	160.2	30.7	68.9
December quarter	113.8	48.4	86.2	21.2	32.2	53.5	101.2	182.7	33.0	77.3

(a) Comprising establishments with 15 or more rooms or units (see Explanatory Notes).

7

HOTELS, MOTELS, GUEST HOUSES AND SERVICED APARTMENTS (a)—Vic.

STAR GRADING

Period	Licensed hotels with facilities	Motels and guest houses	Serviced apartments	1	2	3	4	5	Ungraded	Total
ESTABLISHMENTS, CAPACITY AND EMPLOYMENT (number)										
December quarter 1999										
Establishments	126	505	74	10	84	380	171	14	46	705
Guest rooms	10 903	16 282	4 132	220	2 268	12 229	11 431	3 396	1 773	31 317
Bed spaces	26 339	47 307	12 412	591	6 950	35 022	30 716	7 592	5 187	86 058
Persons employed	14 251	5 839	1 543	169	843	4 422	6 534	8 952	713	21 633
December quarter 2000										
Establishments	126	498	77	8	70	368	193	16	46	701
Guest rooms	11 433	15 589	4 133	259	1 806	11 486	12 332	3 576	1 696	31 155
Bed spaces	27 397	45 294	12 547	742	5 471	32 800	33 100	7 963	5 162	85 238
Persons employed	14 314	5 776	1 610	81	766	4 207	6 904	8 907	835	21 700
ROOM NIGHTS OCCUPIED ('000)										
1999										
December quarter	665.2	752.7	254.8	6.6	78.2	584.0	704.2	221.7	77.9	1 672.7
2000										
October	240.4	248.6	89.5	3.9	18.9	186.4	259.5	81.1	28.7	578.5
November	268.1	254.4	99.4	4.4	19.3	192.3	282.1	93.4	30.2	621.8
December	213.5	207.0	78.1	3.0	17.7	162.4	220.6	71.5	23.4	498.6
December quarter	721.9	709.9	267.0	11.3	55.9	541.1	762.3	246.0	82.3	1 698.9
ROOM OCCUPANCY RATES (%)										
1999										
December quarter	66.3	50.3	67.5	32.8	37.5	52.0	67.0	71.0	48.7	58.1
2000										
October	68.0	51.5	69.9	48.8	34.3	52.3	67.9	73.1	55.5	60.0
November	78.3	54.5	80.1	57.1	36.2	55.8	76.3	87.1	60.3	66.6
December	60.4	42.9	61.0	37.1	32.0	45.6	57.7	64.5	45.7	51.7
December quarter	68.8	49.6	70.2	47.6	34.1	51.2	67.2	74.8	53.8	59.4
GUEST NIGHTS ('000)										
1999										
December quarter	1 010.3	1 302.3	460.0	11.5	146.0	1 038.8	1 130.5	320.3	125.4	2 772.6
2000										
October	355.3	422.5	160.4	7.2	34.0	329.6	405.3	113.7	48.5	938.3
November	403.2	431.5	178.6	7.7	35.3	341.8	445.9	133.6	49.0	1 013.3
December	348.8	379.6	158.8	4.3	33.6	309.4	385.6	110.2	44.0	887.1
December quarter	1 107.3	1 233.6	497.9	19.1	102.9	980.7	1 236.9	357.5	141.6	2 838.7
BED OCCUPANCY RATES (%)										
1999										
December quarter	41.7	30.0	40.5	21.1	22.8	32.3	40.0	45.9	26.6	35.1
2000										
October	42.0	30.2	41.2	31.2	20.5	32.4	39.5	46.0	30.8	35.6
November	49.2	31.8	47.5	34.5	22.0	34.7	44.9	55.9	32.2	39.7
December	41.2	27.2	40.8	18.7	20.3	30.4	37.6	44.7	28.4	33.7
December quarter	44.1	29.7	43.1	28.0	20.9	32.5	40.6	48.8	30.5	36.3

(a) Comprising establishments with 15 or more rooms or units (see Explanatory Notes).

7 HOTELS, MOTELS, GUEST HOUSES AND SERVICED APARTMENTS (a)—Vic. *continued*

STAR GRADING

Period	Licensed hotels with facilities	Motels and guest houses	Serviced apartments	1	2	3	4	5	Ungraded	Total
GUEST ARRIVALS ('000)										
1999										
December quarter	476.8	751.9	146.1	6.8	91.5	548.9	547.3	140.6	39.7	1 374.8
2000										
October	170.1	242.5	50.7	4.1	20.8	171.5	200.9	49.0	16.9	463.3
November	185.4	249.8	55.1	4.5	20.8	175.1	214.7	55.9	19.4	490.3
December	166.2	221.8	49.2	3.0	20.4	160.3	189.3	47.6	16.5	437.2
December quarter	521.7	714.2	155.0	11.6	62.0	506.9	605.0	152.5	52.9	1 390.8
AVERAGE LENGTH OF STAY (days)										
1999										
December quarter	2.1	1.7	3.1	1.7	1.6	1.9	2.1	2.3	3.2	2.0
2000										
December quarter	2.1	1.7	3.2	1.7	1.7	1.9	2.0	2.3	2.7	2.0
TAKINGS FROM ACCOMMODATION (\$'000)										
1999										
December quarter	94 711	63 117	33 817	346	4 515	46 490	85 945	45 126	9 223	191 644
2000										
October	35 745	22 616	12 788	219	1 173	15 470	33 194	17 185	3 908	71 149
November	41 811	23 523	15 017	220	1 243	16 483	37 525	20 461	4 418	80 350
December	30 586	19 282	11 097	184	1 137	13 937	27 954	14 407	3 345	60 964
December quarter	108 141	65 421	38 901	623	3 554	45 890	98 673	52 053	11 670	212 463
AVERAGE TAKINGS PER ROOM NIGHT OCCUPIED (\$)										
1999										
December quarter	142.4	83.9	132.7	52.0	57.7	79.6	122.0	203.6	118.4	114.6
2000										
October	148.7	91.0	142.8	55.9	62.0	83.0	127.9	212.0	136.0	123.0
November	156.0	92.5	151.1	49.7	64.3	85.7	133.0	219.1	146.4	129.2
December	143.3	93.2	142.0	61.6	64.4	85.8	126.7	201.5	143.0	122.3
December quarter	149.8	92.2	145.7	55.0	63.6	84.8	129.4	211.6	141.8	125.1
AVERAGE TAKINGS PER AVAILABLE ROOM NIGHT (\$)										
1999										
December quarter	94.4	42.2	89.6	17.1	21.6	41.4	81.8	144.4	57.6	66.6
2000										
October	101.1	46.9	99.8	27.3	21.3	43.4	86.8	155.0	75.5	73.8
November	122.2	50.4	121.1	28.4	23.3	47.8	101.4	190.7	88.2	86.1
December	86.5	40.0	86.6	22.9	20.6	39.1	73.1	130.0	65.3	63.3
December quarter	103.1	45.7	102.3	26.1	21.7	43.4	87.0	158.2	76.3	74.3

(a) Comprising establishments with 15 or more rooms or units (see Explanatory Notes).

STAR GRADING

Period	Licensed hotels with facilities	Motels and guest houses	Serviced apartments	1	2	3	4	5	Ungraded	Total
ESTABLISHMENTS, CAPACITY AND EMPLOYMENT (number)										
December quarter 1999										
Establishments	173	515	252	14	119	422	267	31	87	940
Guest rooms	20 682	18 573	12 640	362	3 005	16 489	19 797	8 374	3 868	51 895
Bed spaces	63 902	55 483	45 804	907	9 138	54 495	62 642	25 796	12 211	165 189
Persons employed	21 132	6 697	4 148	135	1 409	7 101	9 649	12 039	1 644	31 977
December quarter 2000										
Establishments	172	515	273	9	99	417	293	31	111	960
Guest rooms	20 584	18 465	13 304	209	2 465	15 443	21 933	8 025	4 278	52 353
Bed spaces	63 190	54 864	46 025	558	7 495	49 380	69 242	24 926	12 478	164 079
Persons employed	21 131	6 403	4 125	105	1 160	5 971	10 892	11 868	1 663	31 659
ROOM NIGHTS OCCUPIED ('000)										
1999										
December quarter	1 249.1	984.3	649.2	13.2	125.7	903.0	1 145.3	533.4	162.0	2 882.5
2000										
October	427.5	332.8	251.8	2.8	35.5	278.4	446.1	178.9	70.4	1 012.1
November	436.0	322.3	235.3	2.3	32.4	270.7	433.6	184.7	69.9	993.5
December	395.4	280.5	238.3	2.4	30.8	247.4	398.8	169.7	65.1	914.1
December quarter	1 258.8	935.5	725.3	7.4	98.6	796.4	1 278.6	533.2	205.4	2 919.7
ROOM OCCUPANCY RATES (%)										
1999										
December quarter	65.7	57.8	56.7	39.7	45.6	59.6	63.0	69.2	47.9	60.7
2000										
October	67.0	58.1	61.1	42.5	46.5	58.2	65.6	71.9	53.1	62.4
November	70.6	58.2	58.9	36.2	43.8	58.4	65.9	76.7	54.5	63.3
December	62.0	49.0	57.8	37.4	40.2	51.7	58.7	68.2	49.1	56.3
December quarter	66.5	55.1	59.3	38.7	43.5	56.1	63.4	72.2	52.2	60.6
GUEST NIGHTS ('000)										
1999										
December quarter	2 361.8	1 738.9	1 601.3	20.8	225.3	1 781.9	2 335.5	1 033.0	305.5	5 702.0
2000										
October	779.6	568.5	596.9	4.7	61.2	539.8	885.8	316.1	137.3	1 945.0
November	790.2	542.1	562.0	3.9	56.3	512.0	852.3	332.4	137.3	1 894.3
December	803.7	532.3	638.0	4.5	60.6	532.3	884.6	348.2	143.8	1 974.0
December quarter	2 373.5	1 642.9	1 796.9	13.1	178.0	1 584.0	2 622.8	996.8	418.5	5 813.3
BED OCCUPANCY RATES (%)										
1999										
December quarter	40.2	34.2	38.4	24.9	26.9	35.6	40.6	43.5	28.3	37.7
2000										
October	39.8	33.4	41.8	27.1	26.3	35.3	41.3	40.9	35.5	38.2
November	41.7	32.9	40.7	23.4	25.0	34.6	41.0	44.5	36.7	38.5
December	41.0	31.3	44.7	26.1	26.1	34.8	41.2	45.1	37.2	38.8
December quarter	40.8	32.5	42.4	25.6	25.8	34.9	41.2	43.5	36.5	38.5

(a) Comprising establishments with 15 or more rooms or units (see Explanatory Notes).

STAR GRADING

Period	Licensed hotels with facilities	Motels and guest houses	Serviced apartments	1	2	3	4	5	Ungraded	Total
GUEST ARRIVALS ('000)										
1999										
December quarter	870.4	819.3	360.1	9.5	127.7	717.2	771.8	329.5	94.1	2 049.7
2000										
October	262.0	278.0	141.4	1.9	34.8	224.3	279.8	97.2	43.6	681.5
November	283.6	259.5	135.2	1.7	31.9	210.6	278.8	114.1	41.3	678.4
December	273.2	254.0	143.4	1.7	33.8	213.7	268.9	110.3	42.3	670.7
December quarter	818.9	791.6	420.1	5.3	100.4	648.6	827.5	321.6	127.2	2 030.6
AVERAGE LENGTH OF STAY (days)										
1999										
December quarter	2.7	2.1	4.4	2.2	1.8	2.5	3.0	3.1	3.2	2.8
2000										
December quarter	2.9	2.1	4.3	2.5	1.8	2.4	3.2	3.1	3.3	2.9
TAKINGS FROM ACCOMMODATION (\$'000)										
1999										
December quarter	156 910	72 413	64 241	514	7 445	75 285	111 667	84 301	14 351	293 563
2000										
October	59 688	26 831	25 378	145	2 235	23 356	48 109	31 507	6 545	111 897
November	56 522	25 802	23 122	96	2 051	22 367	45 172	29 556	6 205	105 446
December	53 552	22 488	26 470	118	2 107	21 812	43 817	28 363	6 294	102 511
December quarter	169 762	75 121	74 970	359	6 393	67 534	137 098	89 426	19 045	319 854
AVERAGE TAKINGS PER ROOM NIGHT OCCUPIED (\$)										
1999										
December quarter	125.6	73.6	99.0	38.8	59.2	83.4	97.5	158.0	88.6	101.8
2000										
October	139.6	80.6	100.8	52.5	63.0	83.9	107.8	176.1	92.9	110.6
November	129.6	80.1	98.3	42.4	63.4	82.6	104.2	160.0	88.8	106.1
December	135.4	80.2	111.1	48.8	68.5	88.2	109.9	167.2	96.7	112.1
December quarter	134.9	80.3	103.4	48.2	64.8	84.8	107.2	167.7	92.7	109.5
AVERAGE TAKINGS PER AVAILABLE ROOM NIGHT (\$)										
1999										
December quarter	82.5	42.5	56.1	15.4	27.0	49.7	61.5	109.4	42.5	61.8
2000										
October	93.5	46.9	61.5	22.3	29.2	48.8	70.8	126.6	49.4	68.9
November	91.5	46.6	57.9	15.3	27.7	48.3	68.7	122.8	48.3	67.1
December	83.9	39.3	64.2	18.2	27.6	45.6	64.4	114.0	47.5	63.2
December quarter	89.6	44.2	61.3	18.7	28.2	47.5	67.9	121.1	48.4	66.4

(a) Comprising establishments with 15 or more rooms or units (see Explanatory Notes).

STAR GRADING

Period	Licensed hotels with facilities	Motels and guest houses	Serviced apartments	1	2	3	4	5	Ungraded	Total
ESTABLISHMENTS, CAPACITY AND EMPLOYMENT (number)										
December quarter 1999										
Establishments	62	146	26	7	55	118	41	4	9	234
Guest rooms	4 090	5 166	1 207	204	1 532	4 575	2 645	1 263	244	10 463
Bed spaces	10 144	15 825	4 670	536	4 321	13 476	8 958	2 548	800	30 639
Persons employed	4 146	2 040	463	156	891	2 338	1 822	1 299	143	6 649
December quarter 2000										
Establishments	62	146	26	7	51	116	46	4	10	234
Guest rooms	4 128	5 204	1 220	158	1 491	4 478	2 877	1 263	285	10 552
Bed spaces	10 301	15 715	4 365	387	4 146	13 101	9 342	2 572	833	30 381
Persons employed	4 116	2 025	473	169	737	2 290	1 960	1 323	135	6 614
ROOM NIGHTS OCCUPIED ('000)										
1999										
December quarter	231.9	262.0	68.3	6.3	59.2	236.7	159.7	90.6	9.7	562.2
2000										
October	78.7	91.5	23.3	1.4	20.2	78.3	59.8	30.8	3.0	193.5
November	75.6	89.2	23.7	1.1	18.3	76.0	58.9	30.9	3.3	188.5
December	66.6	79.6	23.1	0.9	17.5	66.0	53.6	27.3	4.0	169.4
December quarter	220.9	260.3	70.1	3.4	56.0	220.3	172.3	89.1	10.3	551.4
ROOM OCCUPANCY RATES (%)										
1999										
December quarter	61.6	55.1	61.5	33.4	42.0	56.2	65.6	78.0	43.4	58.4
2000										
October	61.5	56.7	61.5	27.7	43.6	56.4	67.0	78.7	34.5	59.1
November	61.1	57.2	64.7	23.9	40.8	56.6	68.2	81.6	38.9	59.6
December	52.0	49.4	61.2	18.6	37.9	47.5	60.1	69.8	45.0	51.8
December quarter	58.2	54.4	62.4	23.4	40.8	53.5	65.1	76.6	39.5	56.8
GUEST NIGHTS ('000)										
1999										
December quarter	348.2	449.5	138.2	9.7	100.5	413.5	267.8	125.5	18.8	935.9
2000										
October	115.3	152.2	44.0	2.2	33.8	132.7	96.3	40.9	5.5	311.5
November	109.0	147.0	44.5	1.8	30.9	127.2	93.5	41.2	6.0	300.5
December	106.4	143.8	50.9	1.5	31.5	122.1	99.6	38.1	8.2	301.1
December quarter	330.7	443.0	139.4	5.6	96.2	382.1	289.5	120.2	19.6	913.1
BED OCCUPANCY RATES (%)										
1999										
December quarter	37.3	30.9	32.2	19.7	25.3	33.4	32.5	53.5	25.6	33.2
2000										
October	36.1	31.2	32.5	18.6	26.3	32.7	33.3	51.3	21.2	33.1
November	35.3	31.2	34.0	15.4	24.8	32.4	33.4	53.3	23.8	33.0
December	33.3	29.5	37.6	12.9	24.5	30.1	34.4	47.8	31.6	32.0
December quarter	34.9	30.6	34.7	15.6	25.2	31.7	33.7	50.8	25.6	32.7

(a) Comprising establishments with 15 or more rooms or units (see Explanatory Notes).

STAR GRADING

<i>Period</i>	<i>Licensed hotels with facilities</i>	<i>Motels and guest houses</i>	<i>Serviced apartments</i>	<i>1</i>	<i>2</i>	<i>3</i>	<i>4</i>	<i>5</i>	<i>Ungraded</i>	<i>Total</i>
GUEST ARRIVALS ('000)										
1999										
<i>December quarter</i>	172.2	251.4	44.1	6.5	55.9	224.6	122.2	50.5	8.0	467.7
2000										
October	61.2	88.7	15.8	1.6	21.5	74.9	44.6	20.8	2.5	165.7
November	59.2	85.3	15.3	1.1	18.3	71.5	44.5	21.7	2.7	159.8
December	55.9	82.1	16.8	1.0	19.5	66.9	44.3	19.7	3.4	154.8
<i>December quarter</i>	176.3	256.1	48.0	3.7	59.2	213.3	133.4	62.2	8.6	480.4
AVERAGE LENGTH OF STAY (days)										
1999										
<i>December quarter</i>	2.0	1.8	3.1	1.5	1.8	1.8	2.2	2.5	2.3	2.0
2000										
<i>December quarter</i>	1.9	1.7	2.9	1.5	1.6	1.8	2.2	1.9	2.3	1.9
TAKINGS FROM ACCOMMODATION (\$'000)										
1999										
<i>December quarter</i>	24 619	19 928	6 462	302	3 059	17 136	17 368	12 493	652	51 010
2000										
October	8 739	7 474	2 368	71	1 173	5 983	6 731	4 399	224	18 580
November	8 485	7 155	2 331	56	1 033	5 672	6 599	4 357	252	17 970
December	7 684	6 561	2 411	45	992	5 011	6 318	3 939	350	16 655
<i>December quarter</i>	24 907	21 189	7 109	173	3 198	16 667	19 648	12 695	826	53 205
AVERAGE TAKINGS PER ROOM NIGHT OCCUPIED (\$)										
1999										
<i>December quarter</i>	106.2	76.0	94.7	48.2	51.7	72.4	108.7	137.9	66.9	90.7
2000										
October	111.0	81.7	101.8	52.6	58.1	76.4	112.6	142.8	73.4	96.0
November	112.2	80.2	98.4	49.7	56.6	74.6	112.1	140.9	75.9	95.3
December	115.4	82.4	104.2	49.4	56.6	75.9	117.9	144.1	87.9	98.3
<i>December quarter</i>	112.7	81.4	101.5	50.8	57.1	75.6	114.1	142.6	79.8	96.5
AVERAGE TAKINGS PER AVAILABLE ROOM NIGHT (\$)										
1999										
<i>December quarter</i>	65.4	41.9	58.2	16.1	21.7	40.7	71.4	107.5	29.0	53.0
2000										
October	68.3	46.3	62.6	14.6	25.4	43.1	75.5	112.3	25.3	56.8
November	68.5	45.8	63.7	11.9	23.1	42.2	76.5	115.0	29.5	56.8
December	60.0	40.7	63.7	9.2	21.5	36.1	70.8	100.6	39.6	50.9
<i>December quarter</i>	65.6	44.3	63.3	11.9	23.3	40.5	74.2	109.3	31.5	54.8

(a) Comprising establishments with 15 or more rooms or units (see Explanatory Notes).

STAR GRADING

Period	Licensed hotels with facilities	Motels and guest houses	Serviced apartments	1 and ungraded	2	3	4	5	Total
ESTABLISHMENTS, CAPACITY AND EMPLOYMENT (number)									
December quarter 1999									
Establishments	132	120	66	87	29	128	61	13	318
Guest rooms	9 429	5 752	3 414	2 774	995	7 274	5 160	2 392	18 595
Bed spaces	23 466	15 516	12 114	7 089	2 598	19 958	14 774	6 677	51 096
Persons employed	6 932	2 023	1 177	1 343	533	2 900	2 873	2 483	10 132
December quarter 2000									
Establishments	134	126	72	90	22	135	70	15	332
Guest rooms	9 540	5 861	3 924	2 900	753	7 430	5 635	2 607	19 325
Bed spaces	23 954	15 901	13 357	7 238	1 890	20 532	16 450	7 102	53 212
Persons employed	6 964	2 081	1 398	1 492	363	2 865	2 923	2 800	10 443
ROOM NIGHTS OCCUPIED ('000)									
1999									
December quarter	524.6	273.8	185.7	114.8	39.9	347.6	324.6	157.1	984.1
2000									
October	187.2	101.5	72.8	35.1	11.2	132.1	120.1	63.2	361.6
November	188.1	93.2	67.0	33.5	10.1	123.6	118.0	63.0	348.3
December	160.6	77.9	67.6	33.7	7.5	105.3	103.1	56.5	306.1
December quarter	535.9	272.6	207.5	102.3	28.9	360.9	341.2	182.7	1 016.0
ROOM OCCUPANCY RATES (%)									
1999									
December quarter	60.5	51.8	59.5	45.5	43.5	51.9	68.5	71.4	57.6
2000									
October	63.3	55.9	59.9	39.0	48.2	57.3	68.7	78.2	60.4
November	65.9	53.0	56.9	39.0	44.9	55.4	69.8	80.6	60.2
December	54.5	43.0	55.6	37.9	32.0	45.7	59.2	69.9	51.2
December quarter	61.2	50.6	57.5	38.6	41.7	52.8	65.9	76.2	57.2
GUEST NIGHTS ('000)									
1999									
December quarter	793.6	462.1	409.7	173.7	65.9	609.3	556.0	260.5	1 665.4
2000									
October	278.4	168.7	150.6	53.8	17.8	222.0	199.8	104.1	597.6
November	274.4	150.4	138.4	50.7	15.5	203.6	190.3	103.2	563.2
December	262.6	142.1	158.3	57.7	13.7	193.3	196.3	102.1	563.1
December quarter	815.4	461.2	447.3	162.3	47.0	618.9	586.4	309.3	1 723.9
BED OCCUPANCY RATES (%)									
1999									
December quarter	36.8	32.4	37.1	27.1	27.6	33.2	41.0	42.4	35.5
2000									
October	37.5	34.2	36.4	24.0	30.5	34.9	39.2	47.3	36.2
November	38.2	31.5	34.5	23.5	27.3	33.1	38.6	48.4	35.3
December	35.4	28.9	38.2	25.9	23.4	30.4	38.6	46.4	34.2
December quarter	37.0	31.5	36.4	24.5	27.0	32.8	38.8	47.3	35.2

(a) Comprising establishments with 15 or more rooms or units (see Explanatory Notes).

STAR GRADING

<i>Period</i>	<i>Licensed hotels with facilities</i>	<i>Motels and guest houses</i>	<i>Serviced apartments</i>	<i>1 and ungraded</i>	<i>2</i>	<i>3</i>	<i>4</i>	<i>5</i>	<i>Total</i>
GUEST ARRIVALS ('000)									
1999									
<i>December quarter</i>	359.1	225.6	108.8	84.8	33.5	278.0	213.5	83.6	693.5
2000									
October	123.8	79.7	46.7	25.7	8.0	106.1	75.7	34.6	250.2
November	117.5	71.6	46.1	24.6	7.2	95.9	72.5	35.0	235.2
December	117.6	68.8	53.0	26.0	6.8	94.8	74.7	37.1	239.4
<i>December quarter</i>	358.8	220.1	145.8	76.3	22.0	296.8	222.9	106.7	724.8
AVERAGE LENGTH OF STAY (days)									
1999									
<i>December quarter</i>	2.2	2.0	3.8	2.0	2.0	2.2	2.6	3.1	2.4
2000									
<i>December quarter</i>	2.3	2.1	3.1	2.1	2.1	2.1	2.6	2.9	2.4
TAKINGS FROM ACCOMMODATION (\$'000)									
1999									
<i>December quarter</i>	54 100	21 709	18 205	6 869	2 782	26 561	35 665	22 137	94 014
2000									
October	20 767	8 510	7 223	2 163	783	10 484	13 816	9 254	36 500
November	21 891	7 651	6 789	2 112	715	9 840	13 912	9 752	36 331
December	17 777	6 627	7 447	2 201	561	8 794	11 947	8 348	31 851
<i>December quarter</i>	60 434	22 788	21 459	6 475	2 059	29 119	39 675	27 354	104 682
AVERAGE TAKINGS PER ROOM NIGHT OCCUPIED (\$)									
1999									
<i>December quarter</i>	103.1	79.3	98.0	59.8	69.8	76.4	109.9	140.9	95.5
2000									
October	110.9	83.8	99.2	61.7	69.6	79.4	115.1	146.5	100.9
November	116.4	82.1	101.3	63.0	70.5	79.6	117.9	154.7	104.3
December	110.7	85.1	110.2	65.3	75.0	83.5	115.9	147.7	104.1
<i>December quarter</i>	112.8	83.6	103.4	63.3	71.3	80.7	116.3	149.7	103.0
AVERAGE TAKINGS PER AVAILABLE ROOM NIGHT (\$)									
1999									
<i>December quarter</i>	62.4	41.1	58.3	27.2	30.4	39.7	75.3	100.6	55.1
2000									
October	70.2	46.8	59.4	24.1	33.5	45.5	79.1	114.5	60.9
November	76.8	43.5	57.7	24.6	31.7	44.1	82.3	124.7	62.8
December	60.3	36.6	61.2	24.8	24.0	38.2	68.6	103.3	53.3
<i>December quarter</i>	69.0	42.3	59.4	24.5	29.7	42.6	76.6	114.1	59.0

(a) Comprising establishments with 15 or more rooms or units (see Explanatory Notes).

STAR GRADING

Period	Licensed hotels with facilities	Motels and guest houses	Serviced apartments	1 and ungraded	2	3	4 and 5	Total
ESTABLISHMENTS, CAPACITY AND EMPLOYMENT (number)								
December quarter 1999								
Establishments	55	51	24	9	15	73	33	130
Guest rooms	2 929	1 752	865	277	414	3 003	1 852	5 546
Bed spaces	8 071	5 431	3 487	618	1 073	9 466	5 832	16 989
Persons employed	3 074	735	419	95	239	2 275	1 619	4 228
December quarter 2000								
Establishments	54	49	25	9	17	71	31	128
Guest rooms	2 906	1 677	879	245	532	2 635	2 050	5 462
Bed spaces	8 007	5 226	3 225	731	1 412	8 117	6 198	16 458
Persons employed	2 880	693	426	166	258	1 281	2 294	3 999
ROOM NIGHTS OCCUPIED ('000)								
1999								
December quarter	150.1	84.2	50.0	6.3	10.9	151.3	115.8	284.3
2000								
October	45.4	25.9	15.2	2.5	4.5	39.2	40.3	86.5
November	51.8	29.4	16.6	2.8	5.4	44.6	44.9	97.7
December	44.5	25.0	15.8	2.4	4.6	37.9	40.3	85.2
December quarter	141.7	80.3	47.6	7.8	14.5	121.7	125.6	269.5
ROOM OCCUPANCY RATES (%)								
1999								
December quarter	56.2	52.2	62.9	27.3	28.6	54.8	68.0	56.0
2000								
October	50.4	49.8	55.8	33.3	27.1	48.0	63.5	51.1
November	59.4	58.4	62.9	38.1	33.6	56.5	73.1	59.6
December	49.4	48.1	57.8	32.2	28.1	46.4	63.4	50.3
December quarter	53.0	52.0	58.8	34.5	29.5	50.2	66.6	53.6
GUEST NIGHTS ('000)								
1999								
December quarter	241.8	161.6	104.2	10.6	16.6	281.8	198.6	507.5
2000								
October	71.2	47.5	31.8	5.9	6.7	73.5	64.5	150.6
November	82.3	54.6	34.1	6.2	8.1	83.3	73.3	171.0
December	78.5	50.5	37.7	6.1	7.3	78.7	74.6	166.6
December quarter	232.0	152.6	103.6	18.2	22.1	235.4	212.4	488.2
BED OCCUPANCY RATES (%)								
1999								
December quarter	32.8	32.3	32.5	20.7	16.8	32.4	37.0	32.6
2000								
October	28.7	29.3	31.8	26.0	15.3	29.2	33.6	29.5
November	34.3	34.8	35.2	28.5	19.2	34.2	39.4	34.6
December	31.6	31.2	37.7	26.8	16.7	31.3	38.8	32.7
December quarter	31.5	31.7	34.9	27.1	17.0	31.5	37.3	32.2

(a) Comprising establishments with 15 or more rooms or units (see Explanatory Notes).

STAR GRADING

Period	Licensed hotels with facilities	Motels and guest houses	Serviced apartments	1 and ungraded	2	3	4 and 5	Total
GUEST ARRIVALS ('000)								
1999								
December quarter	139.5	96.0	47.7	4.8	9.9	162.8	105.7	283.2
2000								
October	40.0	26.5	12.9	2.4	3.8	40.8	32.4	79.4
November	47.0	31.3	14.8	2.5	4.6	47.6	38.4	93.1
December	44.8	29.7	16.0	2.8	4.0	46.0	37.7	90.5
December quarter	131.8	87.4	43.8	7.7	12.3	134.5	108.5	262.9
AVERAGE LENGTH OF STAY (days)								
1999								
December quarter	1.7	1.7	2.2	2.2	1.7	1.7	1.9	1.8
2000								
December quarter	1.8	1.7	2.4	2.4	1.8	1.8	2.0	1.9
TAKINGS FROM ACCOMMODATION (\$'000)								
1999								
December quarter	12 207	6 822	5 264	368	479	12 007	11 439	24 293
2000								
October	4 396	2 160	1 710	226	247	2 975	4 818	8 267
November	4 777	2 464	1 793	245	312	3 390	5 087	9 034
December	4 246	2 228	1 927	247	243	3 144	4 768	8 401
December quarter	13 420	6 853	5 430	719	801	9 508	14 673	25 702
AVERAGE TAKINGS PER ROOM NIGHT OCCUPIED (\$)								
1999								
December quarter	81.3	81.0	105.2	58.7	44.0	79.4	98.8	85.4
2000								
October	96.7	83.5	112.4	89.6	55.3	75.9	119.4	95.5
November	92.3	83.8	108.1	87.7	58.3	75.9	113.2	92.4
December	95.5	89.2	122.3	101.3	52.4	83.0	118.4	98.6
December quarter	94.7	85.4	114.2	92.6	55.5	78.1	116.9	95.4
AVERAGE TAKINGS PER AVAILABLE ROOM NIGHT (\$)								
1999								
December quarter	45.7	42.3	66.2	16.0	12.6	43.5	67.1	47.9
2000								
October	48.8	41.6	62.8	29.8	15.0	36.4	75.8	48.8
November	54.8	49.0	68.0	33.4	19.6	42.9	82.7	55.1
December	47.1	42.9	70.7	32.6	14.7	38.5	75.0	49.6
December quarter	50.2	44.4	67.2	31.9	16.4	39.2	77.8	51.1

(a) Comprising establishments with 15 or more rooms or units (see Explanatory Notes).

STAR GRADING

<i>Period</i>	<i>Licensed hotels with facilities</i>	<i>Motels and guest houses</i>	<i>Serviced apartments</i>	<i>1 and ungraded</i>	<i>2</i>	<i>3</i>	<i>4 and 5</i>	<i>Total</i>
ESTABLISHMENTS, CAPACITY AND EMPLOYMENT (number)								
December quarter 1999								
Establishments	23	48	17	18	20	34	16	88
Guest rooms	1 949	3 124	1 153	548	798	2 598	2 282	6 226
Bed spaces	5 553	9 374	3 605	1 586	2 438	7 763	6 745	18 532
Persons employed	1 697	1 075	391	223	234	1 047	1 659	3 163
December quarter 2000								
Establishments	23	49	17	21	19	33	16	89
Guest rooms	1 932	3 143	1 156	701	779	2 463	2 288	6 231
Bed spaces	5 519	9 333	3 928	1 918	2 387	7 619	6 856	18 780
Persons employed	1 703	1 029	359	272	226	930	1 663	3 091
ROOM NIGHTS OCCUPIED ('000)								
1999								
<i>December quarter</i>	110.0	162.5	72.2	23.2	32.7	136.7	152.1	344.6
2000								
October	41.8	58.8	22.5	10.2	11.2	49.9	51.9	123.1
November	38.3	54.9	20.3	9.3	9.8	45.0	49.3	113.4
December	27.4	37.0	16.8	7.3	7.2	32.1	34.6	81.1
<i>December quarter</i>	107.4	150.7	59.6	26.8	28.1	127.0	135.8	317.7
ROOM OCCUPANCY RATES (%)								
1999								
<i>December quarter</i>	61.3	56.5	68.0	46.0	44.5	57.2	72.4	60.2
2000								
October	69.7	60.3	62.9	47.0	46.2	65.3	73.1	63.7
November	66.1	58.2	58.4	44.4	41.9	60.9	71.8	60.7
December	45.7	37.9	46.8	33.5	29.7	42.0	48.7	42.0
<i>December quarter</i>	60.4	52.1	56.0	41.6	39.2	56.0	64.5	55.4
GUEST NIGHTS ('000)								
1999								
<i>December quarter</i>	182.6	268.8	137.6	38.4	54.4	253.0	243.3	589.0
2000								
October	67.6	101.8	43.0	18.1	17.9	93.0	83.4	212.4
November	61.8	93.6	37.0	16.1	16.4	83.2	76.7	192.4
December	45.8	67.0	32.0	13.7	14.2	59.6	57.3	144.8
<i>December quarter</i>	175.3	262.4	112.0	47.9	48.5	235.8	217.5	549.6
BED OCCUPANCY RATES (%)								
1999								
<i>December quarter</i>	35.7	31.2	41.5	26.3	24.2	35.4	39.2	34.5
2000								
October	39.5	35.2	35.3	30.5	24.2	39.4	39.3	36.5
November	37.3	33.4	31.4	28.0	22.8	36.4	37.3	34.1
December	26.8	23.1	26.3	23.0	19.2	25.2	27.0	24.9
<i>December quarter</i>	34.5	30.6	31.0	27.2	22.1	33.6	34.5	31.8

(a) Comprising establishments with 15 or more rooms or units (see Explanatory Notes).

STAR GRADING

Period	Licensed hotels with facilities	Motels and guest houses	Serviced apartments	1 and ungraded	2	3	4 and 5	Total
GUEST ARRIVALS ('000)								
1999								
December quarter	104.2	144.6	46.7	16.8	30.0	137.1	111.6	295.5
2000								
October	36.5	55.7	15.7	8.5	10.7	51.2	37.4	107.8
November	36.6	54.5	14.0	7.0	9.7	51.2	37.2	105.1
December	27.6	38.0	12.4	6.2	8.7	35.1	28.0	78.0
December quarter	100.6	148.1	42.1	21.7	29.1	137.5	102.6	290.8
AVERAGE LENGTH OF STAY (days)								
1999								
December quarter	1.8	1.9	2.9	2.3	1.8	1.8	2.2	2.0
2000								
December quarter	1.7	1.8	2.7	2.2	1.7	1.7	2.1	1.9
TAKINGS FROM ACCOMMODATION (\$'000)								
1999								
December quarter	14 896	14 544	7 503	1 564	2 131	14 858	18 390	36 943
2000								
October	5 411	5 569	2 442	776	768	5 566	6 313	13 423
November	5 098	5 148	2 052	634	680	5 167	5 818	12 299
December	3 497	3 374	1 690	489	466	3 526	4 080	8 560
December quarter	14 006	14 092	6 184	1 899	1 913	14 259	16 211	34 282
AVERAGE TAKINGS PER ROOM NIGHT OCCUPIED (\$)								
1999								
December quarter	135.4	89.5	104.0	67.4	65.2	108.7	121.0	107.2
2000								
October	129.6	94.7	108.3	76.1	68.8	111.6	121.7	109.0
November	133.2	93.8	101.3	68.0	69.5	114.8	118.0	108.4
December	127.7	91.3	100.7	67.1	64.8	109.9	118.0	105.5
December quarter	130.4	93.5	103.8	70.8	68.0	112.3	119.4	107.9
AVERAGE TAKINGS PER AVAILABLE ROOM NIGHT (\$)								
1999								
December quarter	83.1	50.6	70.7	31.0	29.0	62.2	87.6	64.5
2000								
October	90.4	57.2	68.1	35.7	31.8	72.9	89.0	69.5
November	88.0	54.6	59.2	30.2	29.1	69.9	84.8	65.8
December	58.4	34.6	47.1	22.5	19.3	46.2	57.5	44.3
December quarter	78.8	48.7	58.1	29.4	26.7	62.9	77.0	59.8

(a) Comprising establishments with 15 or more rooms or units (see Explanatory Notes).

STAR GRADING

<i>Period</i>	<i>Licensed hotels with facilities</i>	<i>Motels and guest houses</i>	<i>Serviced apartments</i>	<i>1 and ungraded</i>	<i>2</i>	<i>3</i>	<i>4 and 5</i>	<i>Total</i>
ESTABLISHMENTS, CAPACITY AND EMPLOYMENT (number)								
December quarter 1999								
Establishments	14	26	18	8	9	20	21	58
Guest rooms	1 681	1 731	1 304	377	587	1 399	2 353	4 716
Bed spaces	4 544	5 338	4 624	1 173	1 895	4 427	7 011	14 506
Persons employed	1 179	607	407	104	159	486	1 444	2 193
December quarter 2000								
Establishments	15	25	20	10	7	21	22	60
Guest rooms	1 905	1 676	1 439	513	480	1 481	2 546	5 020
Bed spaces	5 120	5 187	4 888	1 570	1 596	4 520	7 509	15 195
Persons employed	1 199	540	430	127	91	533	1 418	2 169
ROOM NIGHTS OCCUPIED ('000)								
1999								
<i>December quarter</i>	95.3	88.7	76.0	15.5	30.9	72.4	141.3	260.1
2000								
October	40.1	29.7	29.8	8.4	8.6	26.9	55.6	99.6
November	39.2	30.0	29.4	9.0	8.8	26.4	54.4	98.6
December	29.3	20.8	23.5	5.9	6.3	20.2	41.3	73.7
<i>December quarter</i>	108.6	80.5	82.8	23.3	23.7	73.5	151.3	271.9
ROOM OCCUPANCY RATES (%)								
1999								
<i>December quarter</i>	61.7	55.7	64.0	46.3	57.2	56.3	65.3	60.1
2000								
October	67.9	57.2	66.8	53.1	58.1	58.6	70.5	64.0
November	68.6	59.6	68.2	58.5	61.0	59.5	71.3	65.5
December	49.6	40.7	52.8	39.0	42.5	44.0	52.3	47.6
<i>December quarter</i>	62.0	52.5	62.5	50.3	53.8	53.9	64.6	59.0
GUEST NIGHTS ('000)								
1999								
<i>December quarter</i>	141.0	151.0	132.7	28.9	54.9	125.1	215.7	424.7
2000								
October	57.1	50.8	59.2	14.6	16.7	51.2	84.6	167.2
November	54.4	51.1	55.6	16.3	17.6	50.0	77.2	161.1
December	45.5	35.3	50.1	10.5	12.4	41.0	67.1	130.9
<i>December quarter</i>	156.9	137.2	165.0	41.4	46.7	142.2	228.9	459.2
BED OCCUPANCY RATES (%)								
1999								
<i>December quarter</i>	33.7	30.8	31.4	27.6	31.5	30.7	33.4	31.9
2000								
October	36.0	31.6	39.1	30.0	33.7	36.6	36.4	35.5
November	35.4	32.9	37.9	34.6	36.8	36.9	34.3	35.3
December	28.6	22.1	33.1	21.9	25.0	29.2	28.8	27.8
<i>December quarter</i>	33.3	28.8	36.7	28.8	31.8	34.2	33.1	32.9

(a) Comprising establishments with 15 or more rooms or units (see Explanatory Notes).

STAR GRADING

<i>Period</i>	<i>Licensed hotels with facilities</i>	<i>Motels and guest houses</i>	<i>Serviced apartments</i>	<i>1 and ungraded</i>	<i>2</i>	<i>3</i>	<i>4 and 5</i>	<i>Total</i>
GUEST ARRIVALS ('000)								
1999								
<i>December quarter</i>	85.2	80.4	36.0	10.6	24.1	58.3	108.6	201.6
2000								
October	30.4	25.5	15.0	4.9	6.1	20.6	39.3	70.9
November	30.5	25.2	14.9	5.3	6.0	20.1	39.1	70.6
December	23.2	18.0	11.9	3.3	4.4	15.2	30.2	53.2
<i>December quarter</i>	84.1	68.7	41.8	13.5	16.6	56.0	108.6	194.6
AVERAGE LENGTH OF STAY (days)								
1999								
<i>December quarter</i>	1.7	1.9	3.7	2.7	2.3	2.1	2.0	2.1
2000								
<i>December quarter</i>	1.9	2.0	3.9	3.1	2.8	2.5	2.1	2.4
TAKINGS FROM ACCOMMODATION (\$'000)								
1999								
<i>December quarter</i>	11 228	6 708	7 877	1 170	2 057	5 541	17 045	25 813
2000								
October	5 108	2 516	3 107	862	534	2 294	7 040	10 730
November	5 008	2 536	3 005	894	528	2 193	6 934	10 549
December	3 491	1 714	2 478	570	381	1 702	5 031	7 684
<i>December quarter</i>	13 607	6 766	8 591	2 327	1 443	6 189	19 004	28 963
AVERAGE TAKINGS PER ROOM NIGHT OCCUPIED (\$)								
1999								
<i>December quarter</i>	117.8	75.6	103.6	75.5	66.5	76.5	120.7	99.2
2000								
October	127.4	84.6	104.3	102.2	61.8	85.3	126.5	107.7
November	127.7	84.6	102.1	99.3	60.1	83.0	127.4	106.9
December	119.2	82.4	105.3	97.3	60.3	84.3	121.8	104.3
<i>December quarter</i>	125.3	84.0	103.8	99.8	60.8	84.2	125.6	106.5
AVERAGE TAKINGS PER AVAILABLE ROOM NIGHT (\$)								
1999								
<i>December quarter</i>	72.6	42.1	66.3	34.9	38.1	43.1	78.7	59.7
2000								
October	86.5	48.4	69.6	54.2	35.9	50.0	89.2	69.0
November	87.6	50.4	69.6	58.1	36.7	49.4	90.8	70.0
December	59.1	33.6	55.6	37.9	25.6	37.1	63.7	49.7
<i>December quarter</i>	77.6	44.1	64.9	50.2	32.7	45.4	81.1	62.8

(a) Comprising establishments with 15 or more rooms or units (see Explanatory Notes).

Period	South Coast	Illawarra	Sydney	Snowy Mountains	Capital Country	Murray	Riverina	Central West
ESTABLISHMENTS, CAPACITY AND EMPLOYMENT (number)								
December quarter 1999								
Establishments	82	55	274	59	45	98	69	122
Guest rooms	2 036	1 816	29 694	2 362	1 441	2 850	1 943	3 533
Bed spaces	6 253	5 411	76 162	9 050	4 321	9 125	5 734	11 018
Persons employed	627	1 143	21 821	459	471	914	640	1 256
December quarter 2000								
Establishments	80	56	296	57	45	98	68	122
Guest rooms	1 947	1 817	33 116	2 284	1 451	2 846	1 936	3 537
Bed spaces	6 020	5 458	83 811	9 091	4 381	9 122	5 717	10 900
Persons employed	638	1 083	22 555	378	453	913	691	1 226
ROOM NIGHTS OCCUPIED ('000)								
1999								
December quarter	94.3	92.5	1 962.5	30.9	66.1	130.8	96.5	172.4
2000								
October	30.0	29.7	715.9	7.5	21.7	44.6	36.5	60.1
November	29.4	29.1	740.8	8.6	21.7	44.7	33.5	52.9
December	28.2	27.9	639.2	8.9	18.4	34.1	28.9	46.4
December quarter	87.7	86.7	2 096.0	25.0	61.9	123.4	98.8	159.4
ROOM OCCUPANCY RATES (%)								
1999								
December quarter	50.7	55.4	72.3	14.3	49.9	49.9	54.0	53.0
2000								
October	49.8	52.8	69.7	10.8	48.3	50.6	60.7	54.8
November	50.4	53.3	74.6	12.7	49.9	52.4	57.6	49.9
December	46.8	49.5	62.3	12.7	41.0	38.6	48.1	42.3
December quarter	49.0	51.9	68.8	12.0	46.4	47.1	55.5	49.0
GUEST NIGHTS ('000)								
1999								
December quarter	177.4	160.3	3 178.3	65.5	120.7	245.7	159.8	315.9
2000								
October	54.8	50.6	1 110.0	15.7	38.8	82.2	58.5	107.0
November	53.1	48.6	1 176.2	17.5	38.7	83.9	53.0	91.1
December	60.1	52.8	1 123.8	20.4	33.9	68.1	49.7	87.9
December quarter	168.1	152.0	3 410.0	53.6	111.4	234.1	161.2	286.1
GUEST ARRIVALS ('000)								
1999								
December quarter	100.2	88.8	1 301.3	30.4	84.6	150.9	113.8	224.0
2000								
October	33.2	28.3	396.7	8.8	25.9	47.6	41.0	73.8
November	31.8	28.1	446.5	8.8	25.6	48.4	36.3	61.8
December	34.1	28.9	427.3	9.3	24.0	40.0	36.0	66.1
December quarter	99.2	85.3	1 270.5	26.9	75.5	136.1	113.3	201.7
TAKINGS FROM ACCOMMODATION (\$'000)								
1999								
December quarter	6 432	9 816	276 165	2 383	4 471	9 125	6 464	11 958
2000								
October	2 196	3 743	125 093	589	1 608	3 354	2 765	4 571
November	2 173	3 469	112 106	686	1 603	3 483	2 561	4 080
December	2 496	3 371	97 234	838	1 348	2 698	2 241	3 421
December quarter	6 865	10 584	334 433	2 112	4 559	9 535	7 566	12 072

<i>Period</i>	<i>Hunter</i>	<i>Mid North Coast</i>	<i>Holiday Coast</i>	<i>Northern Rivers</i>	<i>New England/ North West</i>	<i>Outback</i>	<i>Central Coast</i>	<i>Blue Mountains</i>
ESTABLISHMENTS, CAPACITY AND EMPLOYMENT (number)								
December quarter 1999								
Establishments	95	85	46	77	88	38	39	34
Guest rooms	3 531	2 180	1 760	2 160	2 428	911	1 383	1 293
Bed spaces	11 451	6 869	6 033	6 918	7 285	2 635	4 625	3 766
Persons employed	2 110	771	1 093	663	857	281	1 022	1 049
December quarter 2000								
Establishments	96	84	45	76	89	39	39	34
Guest rooms	3 720	2 207	1 731	2 117	2 477	970	1 366	1 306
Bed spaces	11 852	6 985	5 841	6 613	7 402	2 781	4 554	3 675
Persons employed	2 189	753	1 030	669	841	295	931	1 077
ROOM NIGHTS OCCUPIED ('000)								
1999								
<i>December quarter</i>	176.9	106.7	97.1	104.3	115.8	41.0	69.8	65.4
2000								
October	60.5	35.9	32.8	33.8	43.5	16.0	22.3	21.9
November	62.2	35.9	32.0	33.5	32.7	13.8	22.5	21.8
December	54.8	36.0	31.2	33.0	30.7	10.6	22.6	19.0
<i>December quarter</i>	177.6	107.8	96.1	100.3	106.9	40.4	67.3	62.8
ROOM OCCUPANCY RATES (%)								
1999								
<i>December quarter</i>	54.5	53.2	60.0	52.5	51.9	49.0	54.9	55.0
2000								
October	52.5	52.4	61.2	51.5	56.7	53.1	52.6	54.2
November	55.8	54.3	61.7	52.8	44.0	47.4	54.9	55.8
December	47.5	52.6	59.2	50.3	40.0	35.3	53.4	46.9
<i>December quarter</i>	51.9	53.1	60.7	51.5	46.9	45.2	53.6	52.2
GUEST NIGHTS ('000)								
1999								
<i>December quarter</i>	326.9	208.9	208.9	198.8	203.6	66.8	135.5	120.0
2000								
October	105.4	67.0	66.1	60.7	77.0	26.5	40.6	37.9
November	107.7	66.8	63.4	61.4	52.7	22.0	42.1	38.5
December	108.0	74.2	69.3	69.4	55.7	18.1	47.1	35.6
<i>December quarter</i>	321.1	208.0	198.9	191.5	185.4	66.6	129.7	111.9
GUEST ARRIVALS ('000)								
1999								
<i>December quarter</i>	185.3	128.7	115.1	117.2	141.8	43.7	62.5	58.3
2000								
October	57.8	41.2	34.3	36.6	51.3	16.4	20.4	22.1
November	60.3	42.0	33.3	35.7	36.8	13.0	21.2	23.2
December	61.4	45.2	37.6	37.0	42.5	11.2	21.4	21.6
<i>December quarter</i>	179.5	128.4	105.2	109.3	130.6	40.5	63.1	66.9
TAKINGS FROM ACCOMMODATION (\$'000)								
1999								
<i>December quarter</i>	18 652	8 123	8 562	7 938	7 402	2 393	7 466	7 817
2000								
October	6 863	2 752	2 830	2 678	3 173	1 018	2 541	2 798
November	7 013	2 788	2 757	2 686	2 343	857	2 462	2 826
December	6 804	3 290	3 286	3 086	2 287	672	2 696	2 525
<i>December quarter</i>	20 679	8 831	8 873	8 449	7 803	2 546	7 698	8 149

Period	Melbourne	Wimmera	Mallee	Western	Western Grampians	Bendigo Loddon	Peninsula	Central Murray	Goulburn	High Country
ESTABLISHMENTS, CAPACITY AND EMPLOYMENT (number)										
December quarter 1999										
Establishments	228	6	42	56	21	29	20	21	27	72
Guest rooms	17 960	117	1 280	1 500	494	712	684	559	700	1 925
Bed spaces	45 271	337	3 910	4 667	1 433	2 169	1 823	1 696	2 073	7 020
Persons employed	15 688	29	499	828	200	337	394	161	386	582
December quarter 2000										
Establishments	230	6	42	53	20	31	21	21	27	70
Guest rooms	17 935	117	1 254	1 395	480	784	739	560	696	1 876
Bed spaces	45 195	336	3 786	4 301	1 351	2 380	2 020	1 696	2 008	6 693
Persons employed	15 713	33	510	802	207	360	421	148	379	557
ROOM NIGHTS OCCUPIED ('000)										
1999										
December quarter	1 135.3	4.2	58.4	74.6	22.9	35.5	28.2	25.0	31.9	41.9
2000										
October	397.6	1.7	21.4	20.3	8.4	14.3	8.9	8.9	11.2	12.9
November	438.0	1.4	19.0	24.3	7.7	12.8	9.6	8.1	11.2	14.5
December	345.1	1.5	16.1	22.6	6.1	9.6	9.3	6.5	8.7	12.9
December quarter	1 180.7	4.6	56.4	67.2	22.2	36.7	27.9	23.5	31.1	40.2
ROOM OCCUPANCY RATES (%)										
1999										
December quarter	68.8	38.7	49.6	54.0	50.5	54.1	44.7	48.7	49.5	23.9
2000										
October	71.5	47.3	55.0	46.9	56.2	58.9	38.9	51.3	51.8	22.8
November	81.4	39.9	50.5	58.1	53.6	54.3	43.5	48.4	53.7	26.4
December	62.1	41.5	41.3	52.2	41.2	39.4	40.7	37.3	40.5	22.8
December quarter	71.6	42.9	48.9	52.3	50.3	50.8	41.0	45.7	48.6	24.0
GUEST NIGHTS ('000)										
1999										
December quarter	1 809.1	6.8	100.6	144.1	36.7	61.4	48.5	44.4	51.7	85.8
2000										
October	618.5	2.7	37.2	36.4	13.6	24.5	17.4	15.8	17.1	24.0
November	689.2	2.3	31.6	46.0	12.9	21.7	17.4	14.4	17.5	28.0
December	591.2	2.4	29.7	46.3	10.5	17.0	22.9	11.8	15.1	26.5
December quarter	1 898.9	7.4	98.5	128.7	37.0	63.2	57.7	42.0	49.7	78.5
GUEST ARRIVALS ('000)										
1999										
December quarter	764.6	5.2	61.9	89.8	28.7	44.8	24.6	29.9	36.3	50.1
2000										
October	266.8	1.9	21.9	25.3	9.9	16.7	8.5	10.6	11.1	15.4
November	289.5	1.8	18.7	30.1	9.3	14.9	9.7	9.5	11.2	16.1
December	256.3	1.8	18.1	29.2	7.8	12.7	9.5	7.9	9.9	14.7
December quarter	812.5	5.5	58.7	84.5	27.1	44.4	27.6	28.0	32.2	46.2
TAKINGS FROM ACCOMMODATION (\$'000)										
1999										
December quarter	149 416	210	3 799	6 198	1 586	2 744	3 317	1 871	2 185	3 176
2000										
October	55 607	90	1 514	1 883	601	1 216	1 112	713	816	1 041
November	64 293	80	1 379	2 280	600	1 077	1 257	658	824	1 146
December	46 995	82	1 170	2 327	476	801	1 266	539	680	1 141
December quarter	166 895	252	4 063	6 489	1 677	3 094	3 636	1 911	2 320	3 328

Period	Lakes	Gippsland	Melbourne East	Geelong	Macedon	Spa Country	Ballarat	Central Highlands	Upper Yarra	Murray East	Phillip Island
ESTABLISHMENTS, CAPACITY AND EMPLOYMENT (number)											
December quarter 1999											
Establishments	25	36	15	22	4	5	25	15	13	14	9
Guest rooms	683	1 034	467	696	115	118	887	359	423	321	283
Bed spaces	2 019	2 974	1 111	2 030	243	370	2 727	1 131	1 075	974	1 005
Persons employed	266	315	441	364	86	67	400	108	256	74	152
December quarter 2000											
Establishments	25	35	14	22	3	5	26	14	13	13	10
Guest rooms	669	1 029	449	702	72	118	873	336	430	307	334
Bed spaces	2 012	3 041	1 042	2 034	163	281	2 706	1 037	1 084	924	1 148
Persons employed	237	303	490	349	62	114	481	94	233	67	140
ROOM NIGHTS OCCUPIED ('000)											
1999											
December quarter	24.3	32.5	16.8	35.1	3.7	5.3	41.0	15.4	13.4	14.1	13.4
2000											
October	7.3	11.7	5.2	10.2	1.0	1.6	17.0	5.5	4.6	4.2	4.7
November	8.8	11.7	5.4	11.8	1.0	1.9	15.2	5.4	4.2	4.8	5.0
December	8.0	8.9	4.3	10.5	0.5	1.4	9.9	4.8	3.4	3.5	5.1
December quarter	24.1	32.3	14.9	32.5	2.4	4.9	42.1	15.8	12.2	12.4	14.7
ROOM OCCUPANCY RATES (%)											
1999											
December quarter	38.7	34.1	39.0	54.8	34.6	49.0	50.2	46.7	34.5	47.7	51.3
2000											
October	35.2	36.6	37.4	46.9	43.2	42.7	62.9	53.2	34.7	44.2	45.1
November	43.7	38.0	40.2	56.2	44.4	53.8	58.1	53.5	32.9	51.6	49.6
December	39.5	28.0	30.6	48.1	22.9	38.1	36.4	46.4	25.2	36.4	49.2
December quarter	39.4	34.1	36.0	50.3	36.7	44.8	52.4	51.0	30.9	44.0	47.9
GUEST NIGHTS ('000)											
1999											
December quarter	46.5	48.5	25.2	56.0	4.7	8.9	85.5	29.9	21.5	25.6	31.2
2000											
October	13.2	16.4	7.4	15.8	1.3	2.8	38.7	10.5	7.2	7.1	10.6
November	15.7	17.1	7.8	18.3	1.3	3.2	30.8	11.1	6.6	8.1	12.3
December	16.8	14.1	6.5	17.9	0.8	2.4	20.2	9.7	5.3	6.5	13.5
December quarter	45.7	47.6	21.7	51.9	3.3	8.4	89.8	31.2	19.2	21.7	36.5
GUEST ARRIVALS ('000)											
1999											
December quarter	32.8	32.2	15.1	31.9	2.9	5.4	52.4	19.5	11.0	16.6	19.0
2000											
October	9.5	10.8	4.2	9.4	0.8	2.1	19.9	6.2	3.5	4.6	4.0
November	10.9	11.1	4.7	11.1	0.8	2.4	17.3	6.5	3.2	5.1	6.4
December	11.4	9.4	3.8	10.8	0.5	1.8	12.5	5.5	2.4	4.8	6.6
December quarter	31.8	31.4	12.6	31.3	2.1	6.4	49.8	18.2	9.2	14.5	16.9
TAKINGS FROM ACCOMMODATION (\$'000)											
1999											
December quarter	1 555	2 150	1 650	2 937	396	620	3 367	1 026	1 406	843	1 193
2000											
October	494	847	596	968	123	253	1 527	413	577	273	485
November	598	856	630	1 155	110	296	1 362	409	529	320	493
December	651	659	509	1 028	55	228	834	333	413	238	538
December quarter	1 743	2 362	1 734	3 151	288	777	3 723	1 155	1 519	831	1 515

Period	Gold Coast	Brisbane	Sunshine Coast	Hervey Bay/ Maryborough	Darling Downs	Bundaberg
ESTABLISHMENTS, CAPACITY AND EMPLOYMENT (number)						
December quarter 1999						
Establishments	147	160	95	44	61	24
Guest rooms	13 135	9 909	4 233	1 628	1 568	593
Bed spaces	43 527	28 818	15 798	5 546	4 941	1 780
Persons employed	8 959	7 104	2 349	782	589	211
December quarter 2000						
Establishments	151	162	98	43	64	25
Guest rooms	13 216	9 770	4 479	1 608	1 630	621
Bed spaces	43 713	27 352	15 329	5 510	5 183	1 871
Persons employed	8 915	6 826	2 486	761	597	188
ROOM NIGHTS OCCUPIED ('000)						
1999						
December quarter	772.1	540.8	219.1	76.8	72.1	31.3
2000						
October	255.5	210.2	77.5	26.3	25.4	10.1
November	262.9	196.6	72.7	22.5	23.3	10.1
December	283.6	165.9	77.7	23.4	21.5	9.7
December quarter	802.0	572.8	227.8	72.2	70.3	29.9
ROOM OCCUPANCY RATES (%)						
1999						
December quarter	63.9	60.5	56.3	51.3	50.0	57.9
2000						
October	62.4	69.4	55.8	52.8	50.4	52.5
November	66.3	67.1	54.1	46.7	47.7	54.2
December	69.2	54.8	55.9	46.9	42.5	50.1
December quarter	66.0	63.7	55.3	48.8	46.9	52.3
GUEST NIGHTS ('000)						
1999						
December quarter	1 754.5	859.7	557.5	169.8	130.9	52.0
2000						
October	561.0	329.8	198.4	49.8	42.4	16.5
November	594.3	300.3	184.6	43.3	37.8	16.3
December	688.6	287.0	224.7	51.2	40.2	18.3
December quarter	1 843.8	917.1	607.7	144.3	120.4	51.1
GUEST ARRIVALS ('000)						
1999						
December quarter	483.2	400.4	170.7	83.6	88.2	33.8
2000						
October	137.0	138.5	61.0	26.8	29.6	11.2
November	155.9	131.8	59.5	22.9	26.9	11.0
December	166.4	125.7	63.8	24.3	27.9	12.2
December quarter	459.3	396.0	184.3	74.0	84.4	34.4
TAKINGS FROM ACCOMMODATION (\$'000)						
1999						
December quarter	79 338	51 296	25 763	5 992	4 723	2 281
2000						
October	28 547	21 844	9 252	2 168	1 892	818
November	27 236	19 888	8 366	1 770	1 665	813
December	32 030	16 496	10 171	2 173	1 584	893
December quarter	87 813	58 228	27 788	6 111	5 141	2 524

<i>Period</i>	<i>Fitzroy</i>	<i>Mackay</i>	<i>Whitsundays</i>	<i>Northern</i>	<i>Tropical North Queensland</i>	<i>Outback</i>	<i>Great Barrier Reef</i>
ESTABLISHMENTS, CAPACITY AND EMPLOYMENT (number)							
December quarter 1999							
Establishments	79	51	19	55	153	52	19
Guest rooms	3 014	1 670	2 368	2 396	10 002	1 379	2 751
Bed spaces	9 741	4 950	8 520	6 986	30 742	3 840	9 479
Persons employed	1 686	1 015	2 220	1 512	5 049	501	2 868
December quarter 2000							
Establishments	84	52	18	55	156	52	17
Guest rooms	3 140	1 694	2 140	2 396	10 250	1 409	2 419
Bed spaces	10 133	4 960	7 820	6 986	31 222	4 000	8 420
Persons employed	1 630	957	2 097	1 440	5 260	502	2 680
ROOM NIGHTS OCCUPIED ('000)							
1999							
<i>December quarter</i>	164.8	94.6	137.6	134.8	579.7	58.9	169.2
2000							
October	56.0	29.8	42.7	45.7	211.4	21.3	52.6
November	58.3	28.3	42.6	43.3	214.5	18.3	51.1
December	50.6	27.7	41.4	34.3	163.6	15.0	51.3
<i>December quarter</i>	165.0	85.8	126.7	123.3	589.5	54.6	154.9
ROOM OCCUPANCY RATES (%)							
1999							
<i>December quarter</i>	59.4	61.6	64.9	61.1	63.0	46.4	67.3
2000							
October	57.5	56.8	64.4	61.6	66.5	48.7	70.1
November	61.9	55.6	66.4	60.2	69.7	43.4	70.4
December	52.0	52.7	62.3	46.1	51.5	34.3	68.4
<i>December quarter</i>	57.1	55.0	64.4	55.9	62.5	42.1	69.6
GUEST NIGHTS ('000)							
1999							
<i>December quarter</i>	287.0	162.6	305.4	211.5	1 125.8	85.3	368.5
2000							
October	90.1	48.3	93.5	69.2	416.5	29.6	111.5
November	97.3	46.0	88.7	66.5	395.3	23.8	106.4
December	94.2	51.1	97.9	58.2	340.3	22.3	116.1
<i>December quarter</i>	281.6	145.3	280.0	193.9	1 152.1	75.7	334.1
GUEST ARRIVALS ('000)							
1999							
<i>December quarter</i>	129.7	70.5	92.5	109.5	337.3	50.2	96.8
2000							
October	45.1	21.4	28.0	36.8	128.0	18.3	31.1
November	43.4	20.6	29.3	36.1	126.8	14.2	29.9
December	46.7	23.0	27.7	32.1	107.4	13.5	29.3
<i>December quarter</i>	135.2	65.0	85.0	105.1	362.1	46.0	90.3
TAKINGS FROM ACCOMMODATION (\$'000)							
1999							
<i>December quarter</i>	13 712	6 431	24 166	10 908	65 177	3 777	33 321
2000							
October	4 840	2 225	7 900	4 036	26 886	1 490	11 579
November	5 016	2 110	7 838	3 765	25 659	1 321	10 938
December	4 871	2 066	8 707	2 996	19 456	1 068	12 187
<i>December quarter</i>	14 727	6 401	24 445	10 796	72 001	3 879	34 704

Period	South East	Murraylands	Fleurieu Peninsula	Adelaide	Barossa Valley	Riverland	Mid North	Flinders Ranges	Far North	Eyre Peninsula	Yorke Peninsula	Kangaroo Island
ESTABLISHMENTS, CAPACITY AND EMPLOYMENT (number)												
December quarter 1999												
Establishments	32	4	14	91	8	14	5	19	8	25	8	6
Guest rooms	912	96	460	5 867	351	520	144	623	384	789	150	167
Bed spaces	2 772	293	1 439	16 796	1 039	1 532	436	1 948	1 099	2 322	431	532
Persons employed	425	49	281	3 865	251	505	100	264	183	551	65	110
December quarter 2000												
Establishments	32	4	13	92	9	14	5	19	8	24	8	6
Guest rooms	929	96	436	5 966	366	507	142	650	386	760	147	167
Bed spaces	2 765	303	1 390	16 819	1 021	1 561	440	1 935	1 065	2 148	461	473
Persons employed	462	40	251	3 839	270	508	92	263	181	536	61	111
ROOM NIGHTS OCCUPIED ('000)												
1999												
December quarter	44.9	4.3	16.8	364.9	14.2	23.0	7.2	28.7	12.8	32.0	4.7	8.7
2000												
October	15.6	1.5	4.9	121.1	6.0	7.4	2.9	13.5	5.1	10.6	1.6	3.3
November	16.9	1.7	5.2	120.7	5.6	6.9	2.2	10.5	4.0	10.4	1.3	3.1
December	13.6	1.0	5.0	112.0	4.8	5.8	1.8	8.4	3.3	9.3	1.4	2.8
December quarter	46.1	4.3	15.1	353.8	16.4	20.0	6.9	32.5	12.4	30.3	4.4	9.2
ROOM OCCUPANCY RATES (%)												
1999												
December quarter	53.6	48.2	39.7	67.6	43.9	48.0	54.0	50.1	36.3	44.1	34.1	56.9
2000												
October	54.0	51.7	36.2	65.5	52.8	46.9	66.7	66.9	42.8	45.1	36.0	63.0
November	60.5	59.5	39.5	67.4	50.8	45.5	51.9	54.0	34.1	45.7	30.4	62.4
December	47.4	34.8	37.3	60.6	42.5	36.6	40.0	41.9	27.7	39.5	31.3	53.7
December quarter	53.9	48.5	37.6	64.5	48.7	43.0	52.9	54.3	34.9	43.4	32.6	59.7
GUEST NIGHTS ('000)												
1999												
December quarter	74.3	7.4	37.9	601.2	24.7	36.9	12.8	46.1	21.6	48.7	8.0	16.3
2000												
October	24.2	2.5	10.5	192.5	10.0	11.8	5.4	21.8	8.6	15.5	2.6	6.0
November	26.9	2.7	11.4	189.9	9.9	10.8	4.1	17.2	5.9	13.9	2.2	5.4
December	23.4	2.0	12.4	196.1	9.8	10.5	3.5	14.6	5.4	14.9	2.7	5.9
December quarter	74.6	7.2	34.3	578.4	29.7	33.1	13.1	53.7	19.9	44.3	7.5	17.3
GUEST ARRIVALS ('000)												
1999												
December quarter	48.7	4.9	22.9	248.6	13.9	25.6	8.9	31.1	15.1	32.9	5.1	10.1
2000												
October	16.2	1.7	6.1	87.1	7.3	7.2	3.5	15.6	5.4	10.6	1.6	3.3
November	18.3	1.9	6.8	88.8	6.7	6.5	3.0	11.0	3.7	8.8	1.5	2.9
December	15.6	1.4	7.0	87.7	6.4	6.3	2.5	9.8	3.6	10.0	1.6	2.9
December quarter	50.1	5.0	19.9	263.7	20.4	20.0	8.9	36.4	12.7	29.4	4.8	9.1
TAKINGS FROM ACCOMMODATION (\$'000)												
1999												
December quarter	2 720	242	1 328	37 588	1 378	1 455	509	1 945	901	1 942	273	729
2000												
October	1 060	83	431	13 250	614	477	254	927	403	711	107	264
November	1 126	97	440	13 055	572	458	178	707	315	683	88	252
December	954	61	458	12 377	476	387	151	570	255	623	93	250
December quarter	3 140	240	1 329	38 681	1 663	1 322	583	2 203	973	2 017	289	766

Period	South East	Goldfields	Midwest	Gascoyne	Pilbara	Kimberley	Perth	Peel	South West	Great Southern	Wheatbelt
ESTABLISHMENTS, CAPACITY AND EMPLOYMENT (number)											
December quarter 1999											
Establishments	10	23	25	11	19	27	99	5	57	19	23
Guest rooms	295	1 047	838	498	1 328	1 483	9 207	247	2 314	711	627
Bed spaces	870	2 738	2 195	1 347	3 028	4 392	24 884	878	7 158	2 079	1 527
Persons employed	129	423	382	192	473	622	5 829	132	1 399	325	226
December quarter 2000											
Establishments	10	25	25	11	19	28	104	8	58	20	24
Guest rooms	279	1 063	869	503	1 425	1 522	9 385	459	2 374	762	684
Bed spaces	824	2 775	2 297	1 356	3 010	4 333	25 717	1 544	7 438	2 268	1 650
Persons employed	127	441	365	156	448	779	5 910	199	1 423	311	284
ROOM NIGHTS OCCUPIED ('000)											
1999											
December quarter	14.4	43.4	34.5	20.1	52.8	59.8	571.5	12.7	122.4	31.1	21.4
2000											
October	5.8	16.6	12.1	7.5	23.6	27.4	205.4	5.3	37.7	11.3	8.9
November	5.2	14.2	10.5	5.9	21.0	18.5	213.5	4.9	36.5	10.1	8.1
December	4.8	11.3	8.8	5.4	15.1	13.9	188.1	6.1	36.5	10.0	6.0
December quarter	15.8	42.2	31.4	18.8	59.7	59.7	607.0	16.3	110.8	31.4	23.1
ROOM OCCUPANCY RATES (%)											
1999											
December quarter	53.0	45.0	44.7	43.9	43.2	43.9	67.5	55.8	58.0	47.6	37.6
2000											
October	66.7	50.5	44.8	47.8	53.5	58.0	70.6	37.1	51.3	47.9	42.1
November	62.1	45.9	40.2	38.8	49.0	40.4	75.8	35.7	51.3	44.2	39.7
December	55.6	35.5	32.7	34.9	34.1	29.4	64.7	43.1	49.6	42.2	28.9
December quarter	61.5	44.0	39.2	40.5	45.5	42.6	70.3	38.7	50.7	44.8	36.9
GUEST NIGHTS ('000)											
1999											
December quarter	25.0	61.9	58.2	33.0	65.7	106.8	949.0	31.9	247.7	55.2	31.1
2000											
October	8.8	23.8	20.9	12.4	28.2	48.4	335.8	11.9	76.0	18.2	13.2
November	8.0	19.1	16.5	9.2	24.6	30.7	341.3	10.8	75.8	16.0	11.3
December	8.8	17.2	15.7	9.7	18.5	25.5	337.1	15.8	86.4	19.4	9.1
December quarter	25.6	60.0	53.1	31.3	71.2	104.6	1 014.3	38.5	238.1	53.6	33.5
GUEST ARRIVALS ('000)											
1999											
December quarter	12.2	33.2	33.5	14.7	30.4	31.2	354.5	17.0	109.6	34.6	22.6
2000											
October	4.3	12.4	12.3	5.2	12.1	13.2	125.8	5.3	39.1	11.4	9.1
November	3.7	10.0	9.2	3.6	9.9	9.4	126.9	5.7	39.4	10.1	7.4
December	3.8	10.8	8.6	3.7	7.7	8.0	132.6	6.8	40.0	11.3	6.2
December quarter	11.8	33.2	30.2	12.5	29.7	30.6	385.3	17.7	118.4	32.8	22.7
TAKINGS FROM ACCOMMODATION (\$'000)											
1999											
December quarter	965	3 548	2 332	1 490	3 824	5 835	60 233	1 160	10 987	2 432	1 207
2000											
October	401	1 648	934	554	1 742	2 987	22 645	468	3 564	973	584
November	372	1 280	772	435	1 553	2 001	24 637	432	3 467	879	503
December	350	1 005	667	415	1 078	1 318	20 905	626	4 141	943	402
December quarter	1 123	3 933	2 373	1 403	4 373	6 307	68 187	1 527	11 172	2 795	1 489

Period	Greater Hobart	Southern	East Coast	Northern	Greater Launceston	North West	West Coast
ESTABLISHMENTS, CAPACITY AND EMPLOYMENT (number)							
December quarter 1999							
Establishments	39	14	4	2	30	32	9
Guest rooms	2 128	456	n.p.	n.p.	1 355	987	397
Bed spaces	6 132	1 573	n.p.	n.p.	4 486	2 959	1 165
Persons employed	1 828	285	n.p.	n.p.	1 203	611	194
December quarter 2000							
Establishments	38	14	4	2	30	30	10
Guest rooms	2 065	461	n.p.	n.p.	1 352	951	415
Bed spaces	5 844	1 593	n.p.	n.p.	4 416	2 719	1 245
Persons employed	1 727	258	n.p.	n.p.	1 178	524	197
ROOM NIGHTS OCCUPIED ('000)							
1999							
December quarter	130.6	19.6	n.p.	n.p.	70.4	40.9	15.6
2000							
October	42.9	5.6	n.p.	n.p.	20.4	11.1	4.4
November	44.2	6.8	n.p.	n.p.	24.6	13.3	6.2
December	39.8	6.4	n.p.	n.p.	20.9	10.9	5.0
December quarter	126.9	18.8	n.p.	n.p.	65.9	35.3	15.7
ROOM OCCUPANCY RATES (%)							
1999							
December quarter	67.6	46.7	n.p.	n.p.	56.5	45.1	42.6
2000							
October	67.0	39.3	n.p.	n.p.	48.6	37.5	34.5
November	71.4	49.1	n.p.	n.p.	60.8	46.7	50.2
December	62.2	44.6	n.p.	n.p.	49.8	36.9	38.7
December quarter	66.8	44.3	n.p.	n.p.	53.0	40.3	41.0
GUEST NIGHTS ('000)							
1999							
December quarter	223.4	39.6	n.p.	n.p.	130.0	70.9	29.4
2000							
October	71.5	10.8	n.p.	n.p.	38.4	18.1	7.5
November	74.3	13.7	n.p.	n.p.	45.4	22.0	10.7
December	76.3	14.5	n.p.	n.p.	41.4	19.9	9.6
December quarter	222.1	39.1	n.p.	n.p.	125.2	60.1	27.8
GUEST ARRIVALS ('000)							
1999							
December quarter	102.0	30.6	n.p.	n.p.	74.5	42.4	23.0
2000							
October	30.0	8.1	n.p.	n.p.	21.9	11.0	5.5
November	32.9	9.9	n.p.	n.p.	26.0	13.1	7.9
December	34.5	9.9	n.p.	n.p.	24.3	11.4	7.1
December quarter	97.4	27.8	n.p.	n.p.	72.2	35.4	20.5
TAKINGS FROM ACCOMMODATION (\$'000)							
1999							
December quarter	11 439	1 754	n.p.	n.p.	5 850	3 591	1 219
2000							
October	4 476	512	n.p.	n.p.	1 834	1 005	313
November	4 466	642	n.p.	n.p.	2 157	1 180	433
December	4 183	709	n.p.	n.p.	1 926	1 043	373
December quarter	13 125	1 863	n.p.	n.p.	5 917	3 227	1 118

Period	Darwin	Kakadu	Amhem	Katherine	Tablelands	Petermann	Alice Springs	MacDonnell	Daly	Canberra
ESTABLISHMENTS, CAPACITY AND EMPLOYMENT (number)										
December quarter 1999										
Establishments	33	3	3	10	7	7	22	2	1	58
Guest rooms	2 590	n.p.	n.p.	529	247	n.p.	1 621	n.p.	n.p.	4 716
Bed spaces	7 532	n.p.	n.p.	1 472	683	n.p.	5 008	n.p.	n.p.	14 506
Persons employed	1 496	n.p.	n.p.	182	60	n.p.	822	n.p.	n.p.	2 193
December quarter 2000										
Establishments	34	3	3	10	7	7	22	2	1	60
Guest rooms	2 612	n.p.	n.p.	527	241	n.p.	1 619	n.p.	n.p.	5 020
Bed spaces	7 817	n.p.	n.p.	1 486	694	n.p.	4 947	n.p.	n.p.	15 195
Persons employed	1 427	n.p.	n.p.	171	50	n.p.	731	n.p.	n.p.	2 169
ROOM NIGHTS OCCUPIED ('000)										
1999										
December quarter	168.5	n.p.	n.p.	20.6	7.9	n.p.	78.1	n.p.	n.p.	260.1
2000										
October	52.7	n.p.	n.p.	7.3	2.0	n.p.	34.7	n.p.	n.p.	99.6
November	47.3	n.p.	n.p.	6.5	2.0	n.p.	31.0	n.p.	n.p.	98.6
December	36.7	n.p.	n.p.	4.7	2.0	n.p.	19.4	n.p.	n.p.	73.7
December quarter	136.7	n.p.	n.p.	18.5	6.0	n.p.	85.1	n.p.	n.p.	271.9
ROOM OCCUPANCY RATES (%)										
1999										
December quarter	70.7	n.p.	n.p.	42.4	34.6	n.p.	52.4	n.p.	n.p.	60.1
2000										
October	65.1	n.p.	n.p.	44.7	27.4	n.p.	69.2	n.p.	n.p.	64.0
November	60.4	n.p.	n.p.	40.8	27.8	n.p.	63.8	n.p.	n.p.	65.5
December	45.3	n.p.	n.p.	28.8	26.5	n.p.	38.6	n.p.	n.p.	47.6
December quarter	56.9	n.p.	n.p.	38.1	27.3	n.p.	57.1	n.p.	n.p.	59.0
GUEST NIGHTS ('000)										
1999										
December quarter	267.4	n.p.	n.p.	35.6	13.2	n.p.	130.2	n.p.	n.p.	424.7
2000										
October	82.7	n.p.	n.p.	13.4	3.4	n.p.	62.2	n.p.	n.p.	167.2
November	73.9	n.p.	n.p.	11.4	3.3	n.p.	51.9	n.p.	n.p.	161.1
December	61.8	n.p.	n.p.	8.3	3.6	n.p.	34.0	n.p.	n.p.	130.9
December quarter	218.4	n.p.	n.p.	33.1	10.3	n.p.	148.1	n.p.	n.p.	459.2
GUEST ARRIVALS ('000)										
1999										
December quarter	104.9	n.p.	n.p.	22.6	10.7	n.p.	67.2	n.p.	n.p.	201.6
2000										
October	33.0	n.p.	n.p.	10.5	3.1	n.p.	27.3	n.p.	n.p.	70.9
November	30.4	n.p.	n.p.	8.0	3.0	n.p.	26.7	n.p.	n.p.	70.6
December	27.1	n.p.	n.p.	5.9	3.0	n.p.	17.4	n.p.	n.p.	53.2
December quarter	90.5	n.p.	n.p.	24.4	9.1	n.p.	71.3	n.p.	n.p.	194.6
TAKINGS FROM ACCOMMODATION (\$'000)										
1999										
December quarter	16 170	n.p.	n.p.	1 438	473	n.p.	6 155	n.p.	n.p.	25 813
2000										
October	5 042	n.p.	n.p.	543	148	n.p.	2 887	n.p.	n.p.	10 730
November	4 275	n.p.	n.p.	461	146	n.p.	2 523	n.p.	n.p.	10 549
December	3 258	n.p.	n.p.	338	133	n.p.	1 596	n.p.	n.p.	7 684
December quarter	12 575	n.p.	n.p.	1 342	427	n.p.	7 007	n.p.	n.p.	28 963

	New South Wales	Victoria	Queensland	South Australia	Western Australia	Tasmania	Northern Territory	Australian Capital Territory	Australia
LETTING ENTITIES, CAPACITY AND EMPLOYMENT									
December quarter 1997									
Letting entities(a)	115	17	68	8	4	—	—	2	214
Flats, units and houses									
Single bedroom	378	23	240	12	n.p.	—	—	n.p.	688
Multiple bedroom	6 952	1 087	4 244	568	n.p.	—	—	n.p.	13 219
Total	7 330	1 110	4 484	580	n.p.	—	—	n.p.	13 907
Bed spaces	38 052	7 335	20 374	3 234	n.p.	—	—	n.p.	70 684
December quarter 2000									
Letting entities(a)	107	13	58	8	4	—	—	1	191
Flats, units and houses									
Single bedroom	551	27	235	15	n.p.	—	—	n.p.	863
Multiple bedroom	7 858	1 182	3 778	580	n.p.	—	—	n.p.	13 666
Total	8 409	1 209	4 013	595	n.p.	—	—	n.p.	14 529
Bed spaces	45 690	6 621	18 912	3 683	n.p.	—	—	n.p.	76 198
UNIT NIGHTS OCCUPIED ('000)									
1997									
December quarter	233.8	8.6	208.6	10.9	n.p.	—	—	n.p.	484.2
2000									
October	66.4	2.1	57.7	2.7	n.p.	—	—	n.p.	133.7
November	72.2	1.7	55.8	3.3	n.p.	—	—	n.p.	137.5
December	127.5	7.0	74.7	6.9	n.p.	—	—	n.p.	221.0
December quarter	266.2	10.8	188.2	13.0	n.p.	—	—	n.p.	492.3
UNIT OCCUPANCY RATES (%)									
1997									
December quarter	34.7	8.4	50.6	20.4	n.p.	—	—	n.p.	37.9
2000									
October	28.5	5.6	46.4	14.6	n.p.	—	—	n.p.	31.7
November	32.5	4.7	46.4	18.6	n.p.	—	—	n.p.	33.9
December	55.5	18.7	60.1	37.6	n.p.	—	—	n.p.	52.7
December quarter	38.9	9.7	51.0	23.7	n.p.	—	—	n.p.	39.5
UNIT LETTINGS ('000)									
1997									
December quarter	33.2	1.6	27.2	1.8	n.p.	—	—	n.p.	65.4
2000									
October	10.8	0.4	8.2	0.5	n.p.	—	—	n.p.	20.9
November	11.2	0.4	7.7	0.4	n.p.	—	—	n.p.	20.6
December	19.5	1.1	10.5	1.0	n.p.	—	—	n.p.	33.2
December quarter	41.5	1.9	26.4	1.8	n.p.	—	—	n.p.	74.7
AVERAGE LENGTH OF STAY (days)									
1997									
December quarter	7.0	5.3	7.7	6.2	n.p.	—	—	n.p.	7.4
2000									
December quarter	6.4	5.7	7.1	7.2	n.p.	—	—	n.p.	6.6
TAKINGS FROM ACCOMMODATION (\$'000)									
1997									
December quarter	12 798	989	10 916	776	n.p.	—	—	n.p.	27 226
2000									
October	4 571	338	3 801	157	n.p.	—	—	n.p.	9 263
November	4 741	135	3 433	278	n.p.	—	—	n.p.	9 008
December	10 548	771	6 344	633	n.p.	—	—	n.p.	18 745
December quarter	19 860	1 244	13 578	1 069	n.p.	—	—	n.p.	37 016

(a) The number of real estate agents with 15 or more self-contained units (see Explanatory Notes).

	New South Wales	Victoria	Queensland	South Australia	Western Australia	Tasmania	Northern Territory	Australian Capital Territory	Australia
LETTING ENTITIES, CAPACITY AND EMPLOYMENT									
December quarter 1997									
Letting entities(a)	49	22	304	17	29	14	4	7	446
Flats, units and houses									
Single bedroom	552	573	2 325	139	n.p.	59	73	n.p.	4 080
Multiple bedroom	815	650	7 605	472	n.p.	225	93	n.p.	10 833
Total	1 367	1 223	9 930	611	n.p.	284	166	n.p.	14 913
Bed spaces	5 479	4 524	38 880	2 453	n.p.	1 310	650	n.p.	59 366
Persons employed	437	328	1 450	140	n.p.	82	32	n.p.	2 783
December quarter 2000									
Letting entities(a)	51	18	321	11	22	10	4	4	441
Flats, units and houses									
Single bedroom	462	346	2 941	123	n.p.	43	103	n.p.	4 355
Multiple bedroom	876	587	8 275	181	n.p.	169	93	n.p.	10 951
Total	1 338	933	11 216	304	n.p.	212	196	n.p.	15 306
Bed spaces	5 888	3 736	42 666	1 408	n.p.	1 023	820	n.p.	60 247
Persons employed	565	256	1 661	79	n.p.	51	41	n.p.	2 905
UNIT NIGHTS OCCUPIED ('000)									
1997									
December quarter	73.1	66.8	578.5	37.8	n.p.	16.4	8.7	n.p.	858.4
2000									
October	21.8	18.4	214.9	5.6	n.p.	2.8	4.2	n.p.	289.1
November	23.3	19.4	208.3	5.7	n.p.	3.3	3.9	n.p.	284.3
December	26.3	16.7	221.7	6.6	n.p.	3.5	3.7	n.p.	301.6
December quarter	71.4	54.5	644.9	17.9	n.p.	9.7	11.8	n.p.	875.0
UNIT OCCUPANCY RATES (%)									
1997									
December quarter	58.2	60.3	63.3	67.3	n.p.	62.7	57.3	n.p.	62.6
2000									
October	52.5	63.7	61.8	59.6	n.p.	42.5	69.8	n.p.	60.9
November	58.1	69.3	61.9	62.4	n.p.	52.4	65.6	n.p.	61.9
December	63.4	57.7	63.8	70.4	n.p.	53.9	60.7	n.p.	63.6
December quarter	58.0	63.5	62.5	64.1	n.p.	49.6	65.4	n.p.	62.1
UNIT LETTINGS ('000)									
1997									
December quarter	16.8	16.3	105.2	10.8	n.p.	7.0	1.5	n.p.	178.0
2000									
October	5.4	5.1	52.5	2.4	n.p.	1.3	2.0	n.p.	75.3
November	6.1	4.7	50.8	2.1	n.p.	1.7	1.9	n.p.	73.1
December	6.3	4.6	53.9	2.4	n.p.	1.8	1.8	n.p.	76.8
December quarter	17.8	14.4	157.1	6.9	n.p.	4.8	5.7	n.p.	225.3
AVERAGE LENGTH OF STAY (days)									
1997									
December quarter	4.4	4.1	5.5	3.5	n.p.	2.4	5.8	n.p.	4.8
2000									
December quarter	4.0	3.8	4.1	2.6	n.p.	2.0	2.1	n.p.	3.9
TAKINGS FROM ACCOMMODATION (\$'000)									
1997									
December quarter	7 230	7 039	46 067	2 726	n.p.	985	643	n.p.	69 847
2000									
October	1 979	2 233	18 152	452	n.p.	195	428	n.p.	25 186
November	2 149	2 180	17 317	461	n.p.	221	386	n.p.	24 351
December	3 024	2 093	22 310	606	n.p.	268	380	n.p.	30 658
December quarter	7 152	6 506	57 779	1 520	n.p.	684	1 193	n.p.	80 195

(a) The number of owners or managers with 15 or more self-contained units (see Explanatory Notes).

	New South Wales	Victoria	Queensland	South Australia	Western Australia	Tasmania	Northern Territory	Australian Capital Territory	Australia
LETTING ENTITIES, CAPACITY AND EMPLOYMENT									
December quarter 1997									
Letting entities(a)	164	39	372	25	33	14	4	9	660
Flats, units and houses									
Single bedroom	930	596	2 565	151	297	59	73	97	4 768
Multiple bedroom	7 767	1 737	11 849	1 040	1 103	225	93	238	24 052
Total	8 697	2 333	14 414	1 191	1 400	284	166	335	28 820
Bed spaces	43 531	11 859	59 254	5 687	6 500	1 310	650	1 259	130 050
Persons employed(b)	437	328	1 450	140	258	82	32	56	2 783
December quarter 2000									
Letting entities(a)	158	31	379	19	26	10	4	5	632
Flats, units and houses									
Single bedroom	1 013	373	3 176	138	305	43	103	67	5 218
Multiple bedroom	8 734	1 769	12 053	761	864	169	93	174	24 617
Total	9 747	2 142	15 229	899	1 169	212	196	241	29 835
Bed spaces	51 578	10 357	61 578	5 091	5 069	1 023	820	929	136 445
Persons employed(b)	565	256	1 661	79	208	51	41	44	2 905
UNIT NIGHTS OCCUPIED ('000)									
1997									
December quarter	306.9	75.4	787.1	48.7	76.3	16.4	8.7	23.0	1 342.6
2000									
October	88.2	20.5	272.6	8.3	20.8	2.8	4.2	5.4	422.8
November	95.6	21.1	264.1	9.0	19.6	3.3	3.9	5.3	421.8
December	153.9	23.7	296.4	13.6	22.7	3.5	3.7	5.1	522.7
December quarter	337.6	65.3	833.1	30.9	63.1	9.7	11.8	15.9	1 367.3
UNIT OCCUPANCY RATES (%)									
1997									
December quarter	38.4	35.4	59.4	44.4	59.2	62.7	57.3	74.7	50.7
2000									
October	32.2	30.9	57.7	29.8	57.3	42.5	69.8	72.4	47.1
November	36.4	32.8	57.8	33.4	55.8	52.4	65.6	73.4	48.8
December	56.7	35.7	62.8	48.7	62.7	53.9	60.7	68.9	58.5
December quarter	41.8	33.1	59.5	37.4	58.6	49.6	65.4	71.5	51.5
UNIT LETTINGS ('000)									
1997									
December quarter	50.0	17.9	132.4	12.6	14.0	7.0	1.5	8.1	243.3
2000									
October	16.2	5.5	60.7	2.8	6.0	1.3	2.0	1.8	96.2
November	17.3	5.1	58.4	2.5	5.4	1.7	1.9	1.5	93.8
December	25.8	5.7	64.4	3.3	5.8	1.8	1.8	1.4	110.0
December quarter	59.2	16.3	183.5	8.7	17.2	4.8	5.7	4.6	300.0
AVERAGE LENGTH OF STAY (days)									
1997									
December quarter	6.1	4.2	5.9	3.9	5.5	2.4	5.8	2.8	5.5
2000									
December quarter	5.7	4.0	4.5	3.6	3.7	2.0	2.1	3.4	4.6
TAKINGS FROM ACCOMMODATION (\$'000)									
1997									
December quarter	20 027	8 028	56 983	3 502	5 173	985	643	1 731	97 073
2000									
October	6 550	2 571	21 953	609	1 670	195	428	472	34 448
November	6 890	2 315	20 750	740	1 613	221	386	445	33 360
December	13 571	2 864	28 654	1 239	2 031	268	380	396	49 403
December quarter	27 012	7 750	71 357	2 588	5 314	684	1 193	1 313	117 212

(a) The number of owners, managers or real estate agents with 15 or more self-contained units (see Explanatory Notes).

(b) Employment numbers exclude real estate agents and their employees.

	New South Wales	Victoria	Queensland	South Australia	Western Australia	Tasmania	Northern Territory	Australian Capital Territory	Australia
ESTABLISHMENTS, CAPACITY AND EMPLOYMENT									
December quarter 1997									
Establishments	379	341	164	133	141	35	30	—	1 223
Capacity									
On-site vans	2 881	1 599	1 212	709	1 099	175	117	—	7 792
Other powered sites	42 789	34 895	12 028	11 549	11 920	2 455	2 541	—	118 177
Unpowered sites	12 391	10 819	5 883	4 967	3 086	1 243	2 397	—	40 786
Cabins, flats, etc.	3 622	2 564	1 681	1 489	1 033	316	216	—	10 921
Total Capacity	61 683	49 877	20 804	18 714	17 138	4 189	5 271	—	177 676
Sites occupied by long-term guests	3 664	1 719	2 133	718	1 370	170	281	—	10 055
Other sites permanently reserved	21 243	15 263	755	1 802	2 343	1 047	1	—	42 454
Persons employed	2 041	1 418	807	604	777	150	189	—	5 986
December quarter 2000									
Establishments	404	329	141	127	125	37	25	2	1 190
Capacity									
On-site vans	3 225	1 366	1 072	514	770	n.p.	135	n.p.	7 337
Other powered sites	42 947	34 304	10 616	11 041	11 159	n.p.	1 982	n.p.	114 738
Unpowered sites	11 710	9 530	4 549	3 773	2 581	n.p.	1 860	n.p.	35 558
Cabins, flats, etc.	6 217	3 170	1 874	1 757	1 386	n.p.	387	n.p.	15 232
Total Capacity	64 099	48 370	18 111	17 085	15 896	n.p.	4 364	n.p.	172 865
Sites occupied by long-term guests	4 538	1 968	1 850	897	1 324	n.p.	151	n.p.	10 906
Other sites permanently reserved	21 286	16 059	722	2 249	2 359	n.p.	4	n.p.	43 787
Persons employed	2 406	1 538	730	616	773	n.p.	203	n.p.	6 447
SITE NIGHTS OCCUPIED ('000)									
1997									
<i>December quarter</i>	3 124.7	1 983.0	650.6	492.0	586.3	148.9	92.8	—	7 078.4
2000									
October	1 038.6	664.8	213.0	189.6	201.9	n.p.	36.7	n.p.	2 399.2
November	1 009.0	684.2	178.4	169.0	187.1	n.p.	26.0	n.p.	2 309.2
December	1 187.6	789.8	213.6	198.0	215.5	n.p.	18.0	n.p.	2 686.9
<i>December quarter</i>	3 235.2	2 138.9	605.1	556.5	604.6	n.p.	80.8	n.p.	7 395.3
SITE OCCUPANCY RATES (%)									
1997									
<i>December quarter</i>	55.1	43.2	34.0	28.7	37.2	38.6	19.1	—	43.3
2000									
October	52.3	44.5	37.9	35.8	41.0	n.p.	27.1	n.p.	44.9
November	52.5	47.1	32.8	33.0	39.5	n.p.	19.9	n.p.	44.6
December	59.8	52.7	38.1	37.4	44.0	n.p.	13.3	n.p.	50.2
<i>December quarter</i>	54.9	48.1	36.3	35.4	41.5	n.p.	20.1	n.p.	46.6
TAKINGS FROM ACCOMMODATION (\$'000)									
1997									
<i>December quarter</i>	35 479	17 539	9 975	6 611	8 098	1 281	1 627	—	80 610
2000									
October	13 545	7 280	4 071	2 934	3 402	n.p.	798	n.p.	32 698
November	12 728	7 261	3 273	2 678	3 044	n.p.	612	n.p.	30 284
December	21 038	9 123	3 906	3 692	4 046	n.p.	466	n.p.	43 099
<i>December quarter</i>	47 310	23 664	11 250	9 303	10 491	n.p.	1 876	n.p.	106 080

(a) Comprising establishments with 40 or more powered sites and cabins, etc. (see Explanatory Notes).

	New South Wales	Victoria	Queensland	South Australia	Western Australia	Tasmania	Northern Territory	Australian Capital Territory	Australia
ESTABLISHMENTS, CAPACITY AND EMPLOYMENT									
December quarter 1997									
Establishments	209	110	219	29	76	10	13	4	670
Capacity									
On-site vans	2 995	1 501	3 583	181	867	112	162	63	9 464
Other powered sites	16 274	6 889	15 313	2 281	6 239	559	1 366	459	49 380
Unpowered sites	3 445	1 422	2 761	587	1 423	353	470	419	10 880
Cabins, flats, etc.	1 861	1 249	2 284	303	959	124	89	94	6 963
<i>Total Capacity</i>	<i>24 575</i>	<i>11 061</i>	<i>23 941</i>	<i>3 352</i>	<i>9 488</i>	<i>1 148</i>	<i>2 087</i>	<i>1 035</i>	<i>76 687</i>
Sites occupied by long-term guests	10 085	4 310	10 925	1 236	3 866	187	615	260	31 484
Other sites permanently reserved	1 126	347	311	36	222	31	7	2	2 082
Persons employed	945	373	929	103	364	51	70	59	2 894
December quarter 2000									
Establishments	164	94	222	22	78	7	21	2	610
Capacity									
On-site vans	2 268	1 179	3 568	152	787	n.p.	151	n.p.	8 227
Other powered sites	12 408	6 206	15 375	2 068	6 666	n.p.	2 022	n.p.	45 561
Unpowered sites	1 990	1 125	2 866	547	1 389	n.p.	876	n.p.	9 248
Cabins, flats, etc.	2 616	1 590	2 801	450	1 147	n.p.	288	n.p.	9 004
<i>Total Capacity</i>	<i>19 282</i>	<i>10 100</i>	<i>24 610</i>	<i>3 217</i>	<i>9 989</i>	<i>n.p.</i>	<i>3 337</i>	<i>n.p.</i>	<i>72 040</i>
Sites occupied by long-term guests	8 587	4 281	9 911	1 158	3 343	n.p.	635	n.p.	28 270
Other sites permanently reserved	825	257	301	45	148	n.p.	—	n.p.	1 604
Persons employed	780	366	1 008	144	358	n.p.	130	n.p.	2 817
SITE NIGHTS OCCUPIED ('000)									
1997									
<i>December quarter</i>	<i>1 257.4</i>	<i>507.7</i>	<i>1 264.9</i>	<i>141.0</i>	<i>453.7</i>	<i>30.6</i>	<i>71.7</i>	<i>40.1</i>	<i>3 767.1</i>
2000									
October	350.6	163.3	426.1	45.2	147.9	n.p.	39.1	n.p.	1 186.8
November	342.5	161.4	404.8	44.3	134.7	n.p.	32.3	n.p.	1 134.6
December	372.2	166.8	411.8	46.5	137.6	n.p.	28.9	n.p.	1 179.2
<i>December quarter</i>	<i>1 065.3</i>	<i>491.5</i>	<i>1 242.6</i>	<i>135.9</i>	<i>420.1</i>	<i>n.p.</i>	<i>100.3</i>	<i>n.p.</i>	<i>3 500.6</i>
SITE OCCUPANCY RATES (%)									
1997									
<i>December quarter</i>	<i>55.6</i>	<i>49.9</i>	<i>57.4</i>	<i>45.7</i>	<i>52.0</i>	<i>29.0</i>	<i>37.3</i>	<i>42.1</i>	<i>53.4</i>
2000									
October	58.6	52.2	55.8	45.3	47.7	n.p.	37.8	n.p.	53.1
November	59.2	53.3	54.8	45.9	45.0	n.p.	32.3	n.p.	52.5
December	62.3	53.3	54.0	46.6	44.4	n.p.	27.9	n.p.	52.8
<i>December quarter</i>	<i>60.1</i>	<i>52.9</i>	<i>54.9</i>	<i>45.9</i>	<i>45.7</i>	<i>n.p.</i>	<i>32.7</i>	<i>n.p.</i>	<i>52.8</i>
TAKINGS FROM ACCOMMODATION (\$'000)									
1997									
<i>December quarter</i>	<i>15 613</i>	<i>5 750</i>	<i>14 507</i>	<i>1 423</i>	<i>6 727</i>	<i>470</i>	<i>766</i>	<i>832</i>	<i>46 088</i>
2000									
October	5 222	2 125	6 150	560	2 573	n.p.	590	n.p.	17 411
November	5 273	2 072	5 681	540	2 261	n.p.	484	n.p.	16 507
December	6 134	2 113	6 045	567	2 354	n.p.	403	n.p.	17 840
<i>December quarter</i>	<i>16 629</i>	<i>6 310</i>	<i>17 876</i>	<i>1 667</i>	<i>7 188</i>	<i>n.p.</i>	<i>1 477</i>	<i>n.p.</i>	<i>51 758</i>

(a) Comprising establishments with 40 or more powered sites and cabins, etc. (see Explanatory Notes).

	New South Wales	Victoria	Queensland	South Australia	Western Australia	Tasmania	Northern Territory	Australian Capital Territory	Australia
ESTABLISHMENTS, CAPACITY AND EMPLOYMENT									
December quarter 1997									
Establishments	588	451	383	162	217	45	43	4	1 893
Capacity									
On-site vans	5 876	3 100	4 795	890	1 966	287	279	63	17 256
Other powered sites	59 063	41 784	27 341	13 830	18 159	3 014	3 907	459	167 557
Unpowered sites	15 836	12 241	8 644	5 554	4 509	1 596	2 867	419	51 666
Cabins, flats, etc.	5 483	3 813	3 965	1 792	1 992	440	305	94	17 884
<i>Total Capacity</i>	<i>86 258</i>	<i>60 938</i>	<i>44 745</i>	<i>22 066</i>	<i>26 626</i>	<i>5 337</i>	<i>7 358</i>	<i>1 035</i>	<i>254 363</i>
Sites occupied by long-term guests	13 749	6 029	13 058	1 954	5 236	357	896	260	41 539
Other sites permanently reserved	22 369	15 610	1 066	1 838	2 565	1 078	8	2	44 536
Persons employed	2 986	1 791	1 736	707	1 141	201	259	59	8 880
December quarter 2000									
Establishments	568	423	363	149	203	44	46	4	1 800
Capacity									
On-site vans	5 493	2 545	4 640	666	1 557	305	286	72	15 564
Other powered sites	55 355	40 510	25 991	13 109	17 825	3 059	4 004	446	160 299
Unpowered sites	13 700	10 655	7 415	4 320	3 970	1 620	2 736	390	44 806
Cabins, flats, etc.	8 833	4 760	4 675	2 207	2 533	447	675	106	24 236
<i>Total Capacity</i>	<i>83 381</i>	<i>58 470</i>	<i>42 721</i>	<i>20 302</i>	<i>25 885</i>	<i>5 431</i>	<i>7 701</i>	<i>1 014</i>	<i>244 905</i>
Sites occupied by long-term guests	13 125	6 249	11 761	2 055	4 667	308	786	225	39 176
Other sites permanently reserved	22 111	16 316	1 023	2 294	2 507	1 125	4	11	45 391
Persons employed	3 186	1 904	1 738	760	1 131	212	333	73	9 337
SITE NIGHTS OCCUPIED ('000)									
1997									
<i>December quarter</i>	<i>4 382.1</i>	<i>2 490.7</i>	<i>1 915.5</i>	<i>633.0</i>	<i>1 040.0</i>	<i>179.6</i>	<i>164.5</i>	<i>40.1</i>	<i>10 845.5</i>
2000									
October	1 389.2	828.2	639.1	234.8	349.8	56.5	75.8	12.7	3 586.0
November	1 351.5	845.6	583.1	213.2	321.9	58.5	58.4	11.7	3 443.8
December	1 559.9	956.6	625.4	244.4	353.0	68.1	46.9	11.7	3 866.1
<i>December quarter</i>	<i>4 300.5</i>	<i>2 630.3</i>	<i>1 847.7</i>	<i>692.4</i>	<i>1 024.7</i>	<i>183.1</i>	<i>181.1</i>	<i>36.0</i>	<i>10 895.9</i>
SITE OCCUPANCY RATES (%)									
1997									
<i>December quarter</i>	<i>55.2</i>	<i>44.4</i>	<i>46.5</i>	<i>31.3</i>	<i>42.5</i>	<i>36.6</i>	<i>24.3</i>	<i>42.1</i>	<i>46.4</i>
2000									
October	53.7	45.9	48.3	37.3	43.6	34.2	31.8	40.3	47.3
November	54.0	48.2	45.5	35.0	41.6	36.5	25.3	38.5	46.9
December	60.3	52.8	47.2	38.8	44.2	41.1	19.6	37.2	51.0
<i>December quarter</i>	<i>56.1</i>	<i>49.0</i>	<i>47.0</i>	<i>37.1</i>	<i>43.1</i>	<i>37.3</i>	<i>25.6</i>	<i>38.6</i>	<i>48.4</i>
TAKINGS FROM ACCOMMODATION (\$'000)									
1997									
<i>December quarter</i>	<i>51 092</i>	<i>23 289</i>	<i>24 482</i>	<i>8 033</i>	<i>14 825</i>	<i>1 751</i>	<i>2 393</i>	<i>832</i>	<i>126 698</i>
2000									
October	18 767	9 406	10 221	3 494	5 975	624	1 388	234	50 108
November	18 001	9 333	8 954	3 218	5 304	684	1 096	201	46 791
December	27 172	11 236	9 951	4 259	6 399	855	869	197	60 939
<i>December quarter</i>	<i>63 940</i>	<i>29 974</i>	<i>29 126</i>	<i>10 971</i>	<i>17 678</i>	<i>2 164</i>	<i>3 353</i>	<i>631</i>	<i>157 838</i>

(a) Comprising establishments with 40 or more powered sites and cabins, etc. (see Explanatory Notes).

	New South Wales	Victoria	Queensland	South Australia	Western Australia	Tasmania	Northern Territory	Australian Capital Territory(b)	Australia
ESTABLISHMENTS, CAPACITY AND EMPLOYMENT									
December quarter 1997									
Establishments	82	40	131	35	48	27	31	—	394
Bed spaces	6 892	3 393	9 981	2 408	3 122	1 685	3 169	—	30 650
Persons employed	431	180	819	159	141	107	164	—	2 001
December quarter 2000									
Establishments	102	65	142	26	69	27	30	5	466
Bed spaces	9 508	6 231	12 820	1 942	4 419	1 827	3 163	749	40 659
Persons employed	649	349	1 099	118	253	167	267	70	2 972
GUEST NIGHTS									
1997									
December quarter	413 456	126 230	497 529	74 939	115 189	27 686	132 945	—	1 387 974
2000									
October	147 482	66 864	207 825	22 140	63 216	8 861	53 641	6 106	576 135
November	161 297	79 954	211 456	24 677	65 809	11 630	48 016	6 873	609 712
December	189 933	85 628	199 024	28 554	67 751	14 997	33 835	7 406	627 128
December quarter	498 712	232 446	618 305	75 371	196 776	35 488	135 492	20 385	1 812 975
BED OCCUPANCY RATES (%)									
1997									
December quarter	66.0	40.4	54.8	33.8	40.1	17.9	45.6	—	49.5
2000									
October	50.0	35.7	52.3	36.8	46.1	15.6	54.7	26.3	45.9
November	56.5	44.1	55.0	42.4	49.6	21.2	50.6	30.6	50.2
December	64.4	44.9	50.1	47.4	49.5	26.5	34.5	31.9	49.9
December quarter	57.0	41.5	52.4	42.2	48.4	21.1	46.6	29.6	48.6
GUEST ARRIVALS									
1997									
December quarter	131 749	57 189	185 603	32 957	40 033	17 921	72 777	—	538 229
2000									
October	47 895	21 299	84 752	9 816	19 176	5 224	28 660	2 997	219 819
November	53 017	24 828	85 737	11 221	20 643	7 187	25 631	3 644	231 908
December	60 314	25 736	81 544	12 799	20 999	9 458	17 780	4 043	232 673
December quarter	161 226	71 863	252 033	33 836	60 818	21 869	72 071	10 684	684 400
AVERAGE LENGTH OF STAY (DAYS)									
1997									
December quarter	3.1	2.2	2.7	2.3	2.9	1.5	1.8	—	2.6
2000									
October	3.1	3.1	2.5	2.3	3.3	1.7	1.9	2.0	2.6
November	3.0	3.2	2.5	2.2	3.2	1.6	1.9	1.9	2.6
December	3.1	3.3	2.4	2.2	3.2	1.6	1.9	1.8	2.7
December quarter	3.1	3.2	2.5	2.2	3.2	1.6	1.9	1.9	2.6
TAKINGS FROM ACCOMMODATION (\$'000)									
1997									
December quarter	6 948	1 798	6 770	962	1 497	354	1 964	—	20 292
2000									
October	3 315	1 354	3 740	319	1 038	139	931	139	10 976
November	3 547	1 583	3 817	360	1 108	191	856	156	11 618
December	4 347	1 691	3 572	419	1 123	260	613	173	12 198
December quarter	11 209	4 628	11 129	1 098	3 269	590	2 400	468	34 791

(a) Comprising establishments with 25 or more bed spaces (see Explanatory Notes).

(b) Australian Capital Territory data included with New South Wales in the December quarter 1997 figures.

EXPLANATORY NOTES

INTRODUCTION

- 1** This publication contains data from the ABS quarterly Survey of Tourist Accommodation (STA). The STA is a mailout collection that completely enumerates all in-scope accommodation establishments.
- 2** From the March quarter 1998, the scope and collection strategy for the STA were changed to include only significant accommodation establishments. Data series presented in this publication which relate to the 1997 calendar year have been recompiled on the basis of the new scope.

SCOPE

- 3** On a quarterly basis the STA includes hotels, motels, guest houses and serviced apartments with 15 or more rooms.
- 4** Every third year, beginning with 2000 the STA has been expanded to also include:
 - holiday flats, units and houses of letting entities with 15 or more rooms or units;
 - caravan parks with 40 or more powered sites;
 - visitor hostels with 25 or more bed spaces.
- 5** The short-term non-residential accommodation, which is in scope of this survey, is accommodation which is not let out on a lease basis, and which is let out to guests who would generally, although not necessarily, stay for periods of less than two months.
- 6** Some establishments included in the survey such as caravan parks also provide long-term residential accommodation. For hotels, motels, guest houses and serviced apartments, the amount of such activity is considered to be insignificant and is included in the data presented in this publication.

DEFINITIONS OF ACCOMMODATION ESTABLISHMENTS

- 7** The STA includes the following categories of establishments which provide predominantly short-term non-residential accommodation to the general public:
 - hotels and resorts with facilities - establishments with 15 or more rooms which are licensed to operate a public bar and which provide accommodation on a room/suite basis, with a bath/shower and toilet in most guest rooms, but which do not have full cooking facilities (i.e. hot plates and oven/microwave) in most guest rooms;
 - motels, private hotels and guest houses with facilities - establishments with 15 or more rooms which are not licensed to operate a public bar, and which provide accommodation on a room/suite basis, with a bath/shower and toilet in most guest rooms, but which do not have full cooking facilities (i.e. hot plates and oven/microwave) in most guest rooms;
 - serviced apartments - establishments with 15 or more units which mostly comprise self-contained units at the same location, and which are available on a unit/apartment basis to the general public for a minimum of one night. The units should have full cooking facilities (i.e. hot plates and oven/microwave), refrigerator and bath/shower and toilet facilities; all bed linen and towels should be provided, and daily servicing (i.e. cleaning and bed making) must be available through the on-site management, although this service may not necessarily be used.

EXPLANATORY NOTES *continued*

- holiday flats, units and houses - (excluding establishments predominantly operated on a time-share basis) which are operated by owners, managers or real estate agents who have sole letting rights to at least 15 flats, units or houses for short-term letting. They are mainly self-contained in terms of cooking, bath (or shower) and toilet facilities and do not have breakfast available for guests. Data for holiday flats units or houses include short-term owner operation as well as paying guest occupation.
- caravan parks - establishments with 40 or more powered sites and cabins, etc. which provide either short-term or long-term accommodation to the general public and which provide powered sites for caravans and toilet, shower and laundry facilities for guests.
- visitor hostels - establishments with 25 or more bed spaces which provide accommodation to visitors on a bed basis (rather than by room). This category does not include establishments providing charity type accommodation (e.g. Salvation Army hostels) nor hotels, motels and guest houses without in-room facilities which provide accommodation on a per room basis.

CLASSIFICATION CHANGES

8 As a result of the separate classification of serviced apartments from the March quarter 1998, there have been several changes to definitions of accommodation units. Some units, which were formerly in categories such as hotels, motels or holiday flats, units and houses are now classified as serviced apartments. A small number of establishments which were previously classified as motels have been reclassified as holiday flats, units and houses and are therefore no longer in scope of the quarterly STA, except as described in paragraph 4.

COVERAGE

9 Coverage is comprehensive and from the December quarter 1999, is obtained from the Australian Automobile Association accommodation guide, supplied as an electronic file, which is updated twice yearly. This is supplemented by notification of new tourism developments and their likely opening dates in selected guides, major tourism journals and periodicals and newspapers. Periodic comparison with lists of accommodation establishments provided by the various Tourism Commissions and Industry Associations is also undertaken.

DATA QUALITY

10 The survey does not have a sample component and the data are not subject to sampling variability. However, other inaccuracies collectively referred to as non-sampling error may affect the data. These non-sampling errors may arise from a number of sources, including:

- errors in the reporting of data by respondents;
- errors in the process of capturing data;
- estimation for missing data; and
- definition and classification errors.

Every effort has been made to reduce non-sampling error to a minimum by careful design and testing of questionnaires, and efficient operating procedures and systems used to compile statistics.

11 The December quarter 2000 response rates were:

- 91% licensed hotels, motels and guest houses, serviced apartments.
- 91% holiday flats, units and houses,
- 89% caravan parks.
- 88% visitor hostels.

EXPLANATORY NOTES *continued*

REGIONAL DATA

12 Survey results are aggregated to Tourism Regions as defined by relevant State and Territory Tourist Commissions or equivalent organisations. Details of the composition of Tourism Regions, including maps, are available on request.

ANNUAL CAPACITY DATA

13 ABS releases counts of accommodation establishments and their capacity as at the end of December each year in respect of the pre-1998 scope of the survey (but recognising serviced apartments separately) as follows:

- hotels, motels and guest houses and serviced apartments with facilities and having five or more rooms;
- holiday flats, units and houses (other than those included with serviced apartments) which are operated by owners, managers or real estate agents who have sole letting rights to at least five flats, units or houses for short term letting;
- all caravan parks regardless of size; and
- all visitor hostels regardless of size.

14 As a result of classification changes applied from March quarter 1998 onward, data will not be comparable with that previously published for particular accommodation types.

15 These counts are published annually in a quarterly issue of *Tourism Indicators, Australia* (Cat. no. 8634.0). Counts in respect of December 1999 were published in the June quarter 2000 edition.

UNPUBLISHED STATISTICS

16 The ABS may make available on request certain unpublished tourist accommodation statistics, including statistics for past quarters and for specific areas and more detailed information for specific data items. For example, detailed employment statistics showing the number of full-time, part-time or casual employees may be available.

RELATED PUBLICATIONS

17 Other ABS publications and products which may be of interest include:

Directory of Tourism Statistics, 2000 (Cat. no. 1130.0) (irregular)

Overseas Arrivals and Departures, Australia (Cat. no. 3401.0) (issued monthly)

Tourism Indicators, Australia (Cat. no. 8634.0) (issued quarterly)

Tourist Accommodation, Small Area Data Standard Data Service (SDS)

products for each State/Territory (except the ACT) (Cat. no. 8635.n.40.001) (issued quarterly).

18 Current publications produced by the ABS are listed in the *Catalogue of Publications and Products* (Cat. no. 1101.0). The ABS also issues the *Release Advice* (Cat. no. 1105.0) on Tuesdays and Fridays which lists publications to be released in the next few days. Both are available from any ABS office or the ABS web site.

EFFECTS OF ROUNDING

19 Where figures have been rounded, discrepancies may occur between totals and the sum of the component items.

GLOSSARY

Average length of stay	<p>Average length of stay is expressed in numbers of days and calculated:</p> <ul style="list-style-type: none"> • for hotels, motels and guest houses and serviced apartments, by dividing <i>Guest nights</i> by <i>Guest arrivals</i>. • for holiday flats, units and houses, by dividing <i>Unit nights occupied</i> by <i>Unit lettings</i>.
Bed spaces	Three-quarter beds are counted as one bed space; double beds as two bed spaces. Cots are excluded.
Capacity	Capacity in terms of <i>Guest rooms</i> , <i>serviced apartment units</i> , <i>visitor hostel bed spaces</i> , <i>holiday units</i> or <i>caravan park sites</i> is the maximum number available to accommodate paying guests during the survey period. Capacity closed temporarily for seasonal reasons is included.
Caravan park sites	Includes <i>On-site vans</i> , <i>Other powered sites</i> , <i>Unpowered sites</i> and <i>Cabins</i> , etc.
Establishments	For hotels, motels and guest houses and serviced apartments, caravan parks and visitor hostels, the number of establishments within the scope of the survey which operated for any part of the survey period, or which closed temporarily for the quarter for seasonal reasons.
Guest arrivals	The total number of paying guests counted only on the first night they stayed at the accommodation establishment during the survey period.
Guest nights	The total number of paying guests counted on each night they stayed at the accommodation establishment during the survey period.
Guest rooms	The maximum number of rooms available at each establishment during the survey period for accommodating short-term paying guests. Units and apartments within serviced apartments are treated as rooms in these survey results.
Letting entities	For holiday flats, units and houses, the number of owners, managers or real estate agents within the scope of the survey who operated for any part of the survey period.
Long-term caravan parks	Caravan parks where the majority of paying guests occupied sites for periods of more than two months.
Occupancy	<p>Occupancy in terms of <i>Room nights</i>, <i>Unit nights</i> or <i>Site nights occupied</i> refers to the total number of nights each guest room, serviced apartment unit, holiday unit or caravan park site was occupied during the survey period.</p> <p>Occupancy in terms of <i>Guest nights</i> refers to the total number of paying guests counted on each night they stayed at the accommodation establishment during the survey period.</p>
Occupancy rates	<p><i>Occupancy rates</i> represent occupancy expressed as a percentage of total capacity available during the survey period, e.g. for the period</p> $\text{Room occupancy rate (\%)} = \frac{\text{Room nights occupied}}{(\text{Guest rooms}) \times (\text{No. of days in the period})} \times 100$ <p>providing that, for establishments closing (other than for seasonal reasons) or opening during the survey period, the denominator of the above expression includes only operating periods.</p>

GLOSSARY *continued*

Other sites permanently reserved	The total number of powered and unpowered sites, on-site vans and cabins, etc. continuously let for two months or more of the survey period to tenants who occupy the sites only on a casual or sporadic basis.
Persons employed	The total number of persons working at each accommodation establishment at the end of the survey period (including working proprietors and those working on other than accommodation activities).
Room nights available	The number of guest rooms/units available multiplied by the number of days for which they were available during the survey period. For establishments closing (other than for seasonal reasons) or opening during this period, operating periods only are included.
Serviced apartment units	Units and apartments within serviced apartments are treated as rooms in these survey results.
Short-term caravan parks	Caravan parks where the majority of paying guests occupy sites for periods of less than two months.
Site nights available	The total number of nights each caravan park site was occupied during the survey period.
Sites occupied by long-term guests	The total number of sites, etc. occupied at the end of the survey period by guests who have stayed continuously for 2 months or more.
Star grading	<p>The grading of hotels, motels and guest houses with facilities and serviced apartments based on the classification system used by members of the Australian Automobile Association (AAA). The gradings are allocated according to a points system based on the amenities and facilities available to guests. Details of the grading scheme are contained in the RACV-RAASA members' publication <i>Accommodation Australia</i>, or the individual State guides. For the purpose of classifying establishments to a star grading in this publication, 'half' star gradings are ignored (e.g. a two and a half star grading has been shown as two star).</p> <p>From the June quarter 1999, some (very few) large establishments not star graded by the AAA have been allocated a star grade by the ABS for Survey of Tourist Accommodation statistical tabulation purposes.</p>
Takings from accommodation	<p>Since 1 July 2000, takings from accommodation include gross revenue from the provision of accommodation, including GST. Takings from meals are excluded.</p> <p>Prior to 1 July 2000, takings from accommodation for some jurisdictions included bed taxes. From 1 July bed taxes were abolished being replaced by GST. Takings from accommodation for each month generally represent the takings received during that month. Where payments are received in advance of, or after, the provision of accommodation to guests, the monthly figure for takings from accommodation may not necessarily bear a direct relationship to the number of guests accommodated during the month.</p>
Unit lettings	The total number of times a holiday flat, unit or house was occupied by a new tenant, counted only on the first night it was occupied by the new tenant.
Unit nights	The total number of nights each holiday flat, unit or house was occupied during the survey period.

FOR MORE INFORMATION...

- INTERNET* **www.abs.gov.au** the ABS web site is the best place to start for access to summary data from our latest publications, information about the ABS, advice about upcoming releases, our catalogue, and Australia Now—a statistical profile.
- LIBRARY* A range of ABS publications is available from public and tertiary libraries Australia-wide. Contact your nearest library to determine whether it has the ABS statistics you require, or visit our web site for a list of libraries.
- CPI INFOLINE* For current and historical Consumer Price Index data, call 1902 981 074 (call cost 77c per minute).
- DIAL-A-STATISTIC* For the latest figures for National Accounts, Balance of Payments, Labour Force, Average Weekly Earnings, Estimated Resident Population and the Consumer Price Index call 1900 986 400 (call cost 77c per minute).

INFORMATION SERVICE

Data which have been published and can be provided within five minutes are free of charge. Our information consultants can also help you to access the full range of ABS information—ABS user-pays services can be tailored to your needs, time frame and budget. Publications may be purchased. Specialists are on hand to help you with analytical or methodological advice.

- PHONE* **1300 135 070**
- EMAIL* **client.services@abs.gov.au**
- FAX* 1300 135 211
- POST* Client Services, ABS, GPO Box 796, Sydney 1041

WHY NOT SUBSCRIBE?

ABS subscription services provide regular, convenient and prompt deliveries of ABS publications and products as they are released. Email delivery of monthly and quarterly publications is available.

- PHONE* 1300 366 323
- EMAIL* subscriptions@abs.gov.au
- FAX* 03 9615 7848
- POST* Subscription Services, ABS, GPO Box 2796Y, Melbourne 3001



2863500012007
ISSN 1031-0770

RRP \$22.00